

## Moving toward a prosperous, healthy, and vibrant St. Louis

Planning began in 2010 when the U.S. Department of Housing and Urban Development awarded eleven public, private and non-profit organizations from the St. Louis region a grant to plan more livable and sustainable communities in the St. Louis region.

In 2011, four committees – Steering, Public Engagement, Technical Planning, and Outcome Management – were formed; and almost 200 representatives from area organizations have joined the committees to provide direction in such areas as housing, transportation, stormwater management and recreation.

In 2012, citizens in eleven local planning areas shared their concerns, interests, and aspirations for building a more livable and sustainable St. Louis region.

### March 2013

Draft goals & objectives developed based on public input

### May 2013

Local government & planning area meetings held to review goals

### August 2013

Draft plan released for public comment

### September 2013

Large-scale public open houses held to review draft plan

### October 2013

Regional plan adopted by East-West Gateway

### November 2013 and beyond

Plan adopted by local governments



*This project was funded through a grant from the U.S. Department of Housing and Urban Development. East-West Gateway Council of Governments fully complies with Title VI of the Civil Rights Act of 1964 and related statutes and regulations in all programs and activities. For more information, or to obtain a Title VI Complaint Form, see <http://www.ewgateway.org> or call (314) 421-4220.*

### Get involved!

Visit [www.OneSTL.org](http://www.OneSTL.org).

Like us on Facebook.

Attend an event near you.



**OneSTL** advances a prosperous, healthy and vibrant future for St. Louis communities and the entire region.



Join OneSTL  
and help the  
St. Louis region  
become ...

... a more  
prosperous,  
healthy and vibrant  
place to live, work,  
play and learn,  
now and in the  
future.

Your voice and efforts can transform St. Louis into a more sustainable region that:

- Creates healthy, safe and walkable neighborhoods
- Provides safe, reliable and affordable transportation choices
- Expands housing choices for people of all ages, incomes and races
- Enhances economic competitiveness by attracting well-trained workers and cutting-edge industries
- Promotes and supports partnering among neighboring municipalities
- Revitalizes communities with strategies, such as transit oriented development, stormwater management and trails

## REGIONAL PARTNERS

OneSTL is led by 11 core regional partners. These partners include:

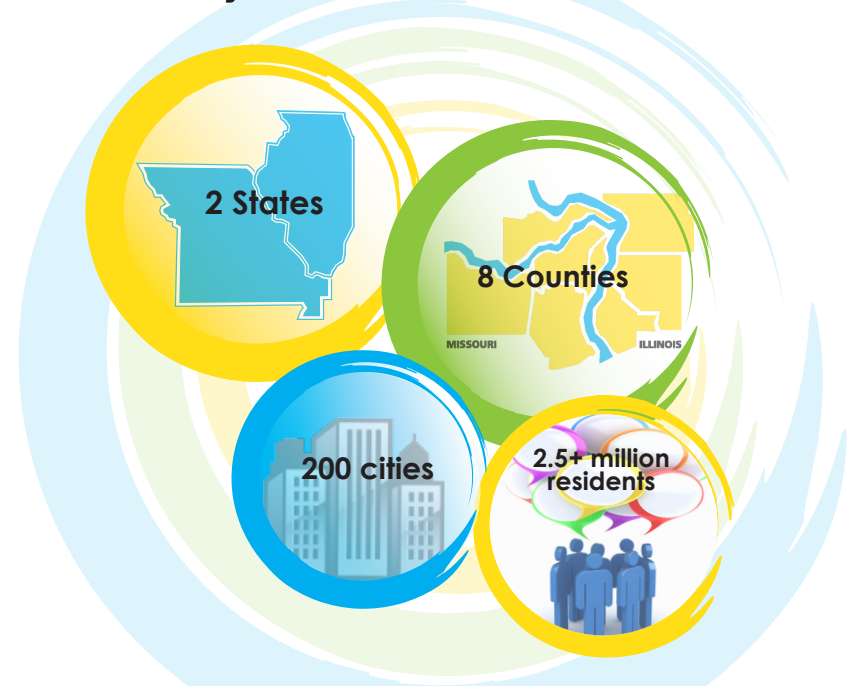
- East-West Gateway Council of Governments
- City of St. Louis
- St. Louis County
- FOCUS St. Louis
- Metro
- Trailnet
- Citizens for Modern Transit
- Metropolitan St. Louis Equal Housing and Opportunity Council
- HeartLands Conservancy
- Great Rivers Greenway District
- Applied Research Collaborative (St. Louis University, University of Missouri - St. Louis, Southern Illinois University Edwardsville)

The St. Louis region is comprised of two states, eight counties, nearly 200 cities and more than 2.5 million residents. Each state, county, city and resident is unique; yet all of us desire the same result – a sustainable community for our generation, our children’s generation and their children’s generation. The decisions we make today must be flexible enough to consider the resources, impacts and realities of the future.

Building the region as a prosperous, healthy and vibrant place requires all of us to make conscious individual and collective choices. The first choice is sharing your ideas at a public forum or at OneSTL.org, the project website. Future choices may include joining a neighborhood watch group, using energy saving light bulbs, biking to work or joining a local committee or interest group.

**The choice starts with you!**

**We are Many Communities with One Future.**



**PROSPEROUSHEALTHYVIBRANT**