

CPA Short Survey Results:
An On-line survey focused on Community Planning Area
Feedback, from February 1, 2012 through April 30, 2012

Regional Plan for Sustainable Development
East-West Gateway Council of Governments

May 31, 2012



Table of Contents

East-West Gateway Council of Governments	1
Introduction.....	2
Methodology	3
Response Summary.....	5
Summaries by CPA.....	7
Belleville-Swansea CPA.....	7
City of St. Louis CPA	8
East Riverfront CPA	9
Ferguson and Environs CPA.....	9
Lemay CPA.....	9
Mid-Metro 5.....	10
Northeast County CPA	10
Pevely-Herculaneum-Festus-Crystal City CPA.....	11
Riverbend CPA	12
Tri-City CPA.....	12
Wentzville-Lake St. Louis-O’Fallon CPA.....	13
Next Steps	13
On-Line Short Survey Results	15

Introduction

As part of the Regional Plan for Sustainable Development, East-West Gateway developed two surveys to obtain information about citizen's awareness and understanding of sustainability. The first was a telephone survey conducted by a polling firm, and the second was a short version of that survey, available for voluntary response on line.

In November 2011, residents in the St. Louis region participated in a telephone survey that was intended to collect their baseline attitude towards sustainability. The survey was designed to record St. Louis-area residents' attitudes toward the following topics:

- Housing;
- Transportation;
- Public Services;
- Environment;
- Economic Competitiveness;
- And Sustainability.

Several questions were asked within each topic area and were followed by a final question asking the respondent to choose the issue within each topic area that they thought was the most important.

Residents in the following counties were randomly selected to participate in the survey: City of St. Louis, Jefferson County, St. Charles County and St. Louis County in Missouri; and Madison County, Monroe County, and St. Clair County in Illinois. Additionally, minority, low-income, and elderly populations were over-sampled to ensure that their attitudes were represented in the survey results.

The results from the survey are considered to be statistically valid. However, the results are only valid when referring to the St. Louis region as a whole. The survey as a regional instrument is valuable to help determine regional values for the sustainability plan. Of immediate relevance is what is important at the local level. As public engagement is occurring in the Community Planning Areas (CPA), scenarios and best practices are being formulated based on preferences, values, and priorities of residents as related to where they live.

To help determine where local values may differ from regional values, a smaller survey was created using the regional telephone survey as a model. By comparing responses of local residents to the statistically valid regional responses we hope to be able to:

- 1.) Assess whether residents in a CPA need more information regarding sustainable development practices.
- 2.) Determine if there are local conditions that affect the difference in attitude.
- 3.) Determine which Environmental Best Practices are most appropriate to discuss with the residents.
- 4.) Formulate scenarios that are relevant to CPA residents.

Methodology

The original baseline attitude survey consisted of 38 questions, was administered via telephone, and took approximately 15 minutes to complete. The short survey was constructed as a subset of the questions asked in the telephone survey. It consisted of 16 questions, was administered via the Internet and took approximately 5-7 minutes to complete.

The questions in the short survey were derived directly from questions in the telephone survey. However, the format of the surveys required some changes to text of the questions and available responses. The short survey needed to be more succinct and easier to understand. Because of the changes made, a direct comparison of responses would have involved too much interpretation. As a result, the comparison will have to be completed on the interpretation of responses from the two surveys based on the sustainability topics by which the questions were categorized.

The questions used in the survey included

- General demographics (3 questions),
- The respondents' zip code (1 question),
- The final summary question from each topic area listed above (6 questions),
- Questions about sustainable activities in St. Louis (4 questions) and
- Open ended questions on first thoughts about sustainability (2 questions).

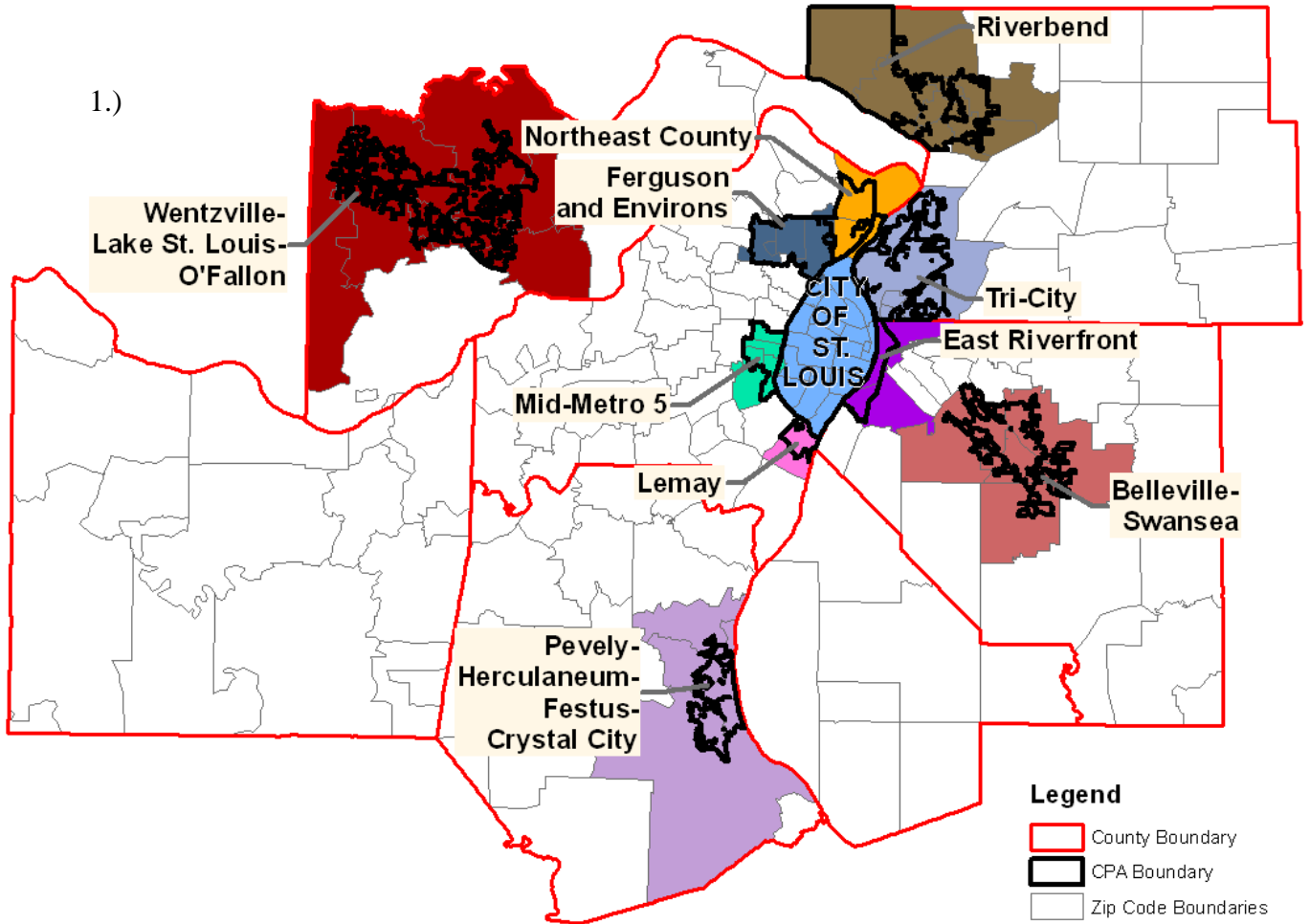
The questionnaire was created on www.surveymonkey.com and a link to the survey was posted on the portion of East-West Gateway's website dedicated to the sustainability grant. The link to the website was published in Local Government Briefings; was sent to various e-mail lists maintained by East-West Gateway; was distributed to the Consortium Partners, general Partners, and members of all the committees; and was distributed among key stakeholders associated with the CPAs. CPA stakeholders were asked to distribute the survey to church groups, residents' associations and other organizations.

The survey was made live on February 1 and remained open until April 30. During that time 563 responses were collected. In the survey, respondents were asked to provide their zip code. Assignments were made to the zip code responses that allowed us to associate zip codes to CPA by proximity. Responses within certain zip codes were aggregated by that association. With aggregated responses we were able to compare responses from residents within the CPA to responses from the regional survey on the sustainability topics covered.

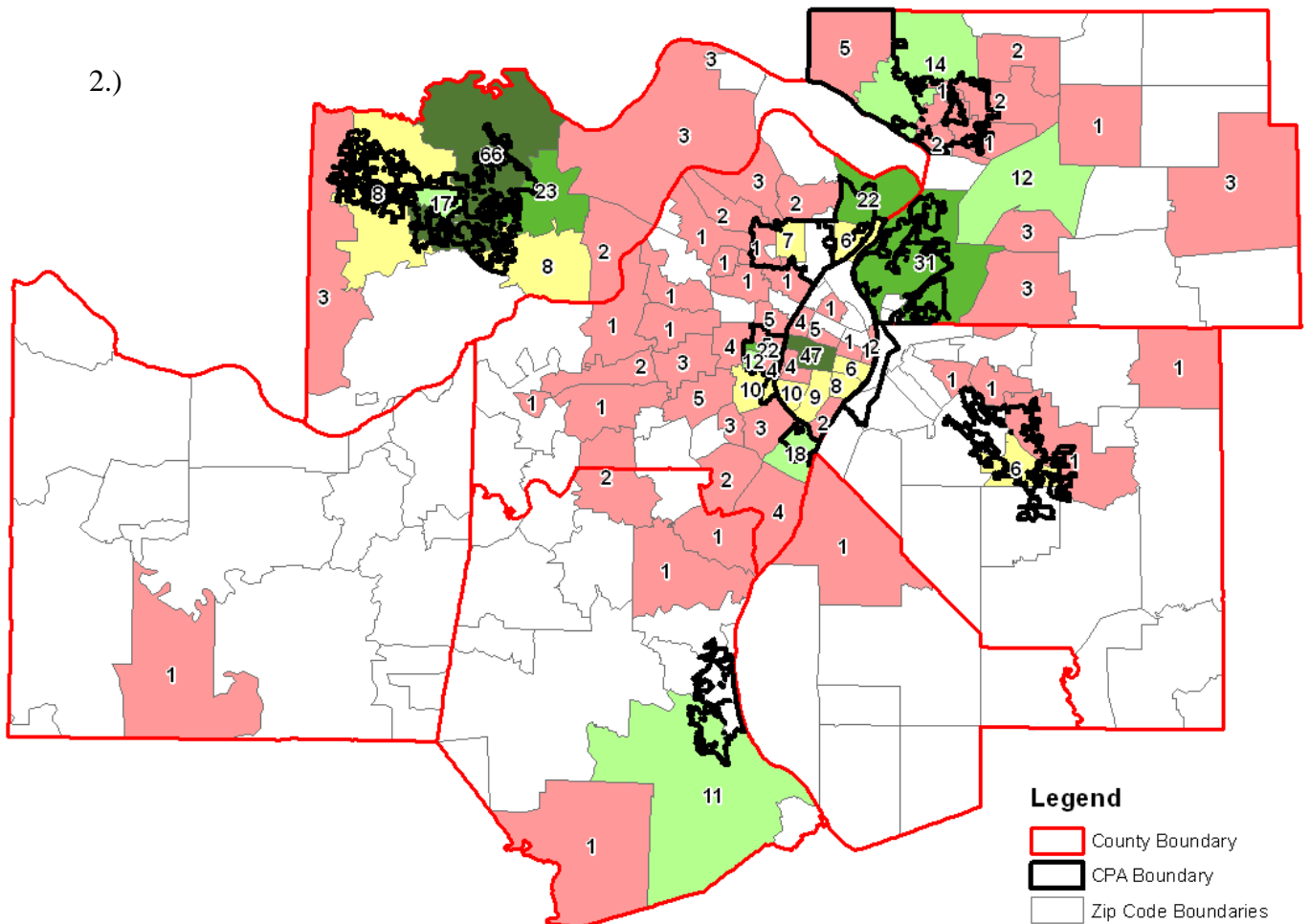
It is important to note that the short survey and the aggregated responses do not qualify as statistically valid or representative. The short survey responses and the aggregated responses are only meant to guide discussions at public engagement and other meetings.

The images on the next page illustrate 1.) the zip codes assigned to each CPA for purposes of aggregating survey responses, and 2.) the number of responses to the survey by zip code.

1.)



2.)



Response Summary

A total of 563 persons responded from 58 zip codes. Of those 58 zip codes, 45 are associated or in proximity to a CPA. The table below shows the number of responses collected from zip codes associated with each CPA.

CPA	# Respondents
Belleville-Swansea	7
City of St. Louis	100
East Riverfront	0
Ferguson and Environs	8
Lemay	18
Mid-Metro 5	53
Northeast County	28
Pevely-Herc.-Festus-Crystal City	11
Riverbend	25
Tri-City	31
Wentz, Lake STL, O'Fallon	166
Non-CPA	124

The bullets below summarize the themes that emerged by question.

- Transportation goals: An expansion of public transportation to a wider area was the most commonly cited transportation goal. This was true in each of the CPAs except for Belleville-Swansea, where there were only 7 responses.
- Single occupancy vehicle was overwhelmingly the most common form of travel in each CPA, although there were several bikers among respondents from the City of St. Louis.
- Respondents had mixed feelings about the ease of travel and commute in the St. Louis area. Asked to rate agreement with the statement, "I am currently easily able to commute and travel around the entire St. Louis area using the mode of transportation that I most prefer," average scores ranged from 4.56 in Riverbend to 6.87 in Tri-City, indicating neither strong satisfaction nor dissatisfaction.
- Diversity of housing stock and ownership opportunities were valued in each CPA. The most common responses to the question regarding housing priorities in each CPA was either "having enough diverse housing types" or "having enough homeownership options for all income levels...."
- Regarding public services, education was the overwhelming priority across CPAs. Healthcare was a strong but distant second.
- There was considerable diversity of opinion about top environmental priorities (see Table 6). In most CPAs, access to open space and parks was the top priority, followed by recycling. Policies to address climate change were supported by a substantial minority in the City of St. Louis, and Mid-Metro 5. Clean air and

clean streams were frequently mentioned priorities in Wentzville-Lake St. Louis-O'Fallon.

- Employment opportunities were overwhelmingly the top priority with respect to economic priorities.
- Economic competitiveness was overwhelmingly seen as the top goal for the region in every CPA except for Riverbend, where competitiveness tied with environment.
- When asked to define sustainability, the greatest number of responses across all CPAs (219) mentioned environmental concerns. The economy was a strong second, with 131 responses. In several CPA, economic concerns were more frequently cited than environmental; these included Ferguson, Northeast County, Herculaneum and Tri-City. Aside from environment and economy, no other individual category of responses garnered more than 40 responses. There were a fair number of negative responses as well, including references to communism, granola, and "having someone from a foreign country command what I can do with my property." The table below shows coded responses for each CPA.

	Transportation	Environment	Economics	Equity	Negative	Other
Belleville-Swansea	0	5	1	0	1	1
City of St. Louis	14	55	25	9	1	5
Ferguson and Environs	2	3	4	0	0	0
Lemay	1	4	3	2	1	3
Mid-Metro 5	5	26	15	4	1	4
Northeast County	1	7	8	2	2	4
Pevely, Crystal City, Festus, Herculaneum	0	2	5	0	1	1
Riverbend	1	15	7	1	1	2
Tri-City	0	7	9	2	0	3
Wentzville, Lake St. Louis, O'Fallon	5	45	31	3	10	25
Non-CPA	10	50	23	3	4	27

- The next section summarizes the responses to the open-ended questions addressing community concerns by CPA. The regional totals regarding each different topic of each concern are shown in the graph below. The most common topic of concern was transportation, followed by jobs and the economy, crime, education, housing, and the environment. Fifty-two responses were classified as “other”, meaning that the content of that response did not match any of these topics.

Topic	Number of Responses
Racial/Economic disparity	26
Crime	74
Education	70
Jobs/Economy	89
Housing	61
Transportation	102
Environment	45
Sprawl	6
Fragmentation	25
Government/Leadership	63
Development	27
Poverty	6
Other	52

Summaries by CPA

The following sections summarize resident responses by CPA.

Belleville-Swansea CPA

- Maintain the current network of roads and highways ([Question 1](#))
- Most people drive alone ([Question 2](#))
- Fairly satisfied with their ease of being able to get around the region ([Question 3](#))
- Having enough diverse housing types in each community, Access to high-quality public education for kindergarten through high school, A well-developed system for recycling, Employment opportunities across different job sectors, are their top investment priorities. ([Question 4,5,6,7](#))
- Economic competitiveness is #1 for long term health of our region ([Question 8](#))
- CPA residents rated living in St. Louis at 6.29 out of 9, tied for the second highest rating of all CPA ([Question 9](#))
- Trends in responses about the meaning of sustainability include economic stability over the long term and resource conservation. ([Question 10](#))

- The concerns within this planning area nearly all centered around three issues: education, housing, and government. Comments relating to education all dealt with the negative effects that budget cuts have on public schools and the educational experience, which students will have as a result. Concerns over housing all related to vacancy housing. Concerns over how to fill vacant homes, inaccurate housing data, and declining housing values, which result due to vacant homes in the vicinity of occupied homes, were the three issues raised in the survey. The other final topic of concern resulting from this Community Planning Area was government. One response specifically stated concern stating that the state of Illinois has spent money in an unsustainable manner, whereas the others simply stated government as a concern. [\(Question 11\)](#)
- CPA residents ranked the importance of the region addressing sustainability as 8.29 out of 9. The second highest of the CPAs. [\(Question 12\)](#)

City of St. Louis CPA

- Expand the public transportation system to a wider area [\(Question 1\)](#)
- Most people drive alone [\(Question 2\)](#)
- Fairly satisfied with their ease of being able to get around the region (2nd Lowest rating of all of the CPA's) [\(Question 3\)](#)
- Having enough diverse housing types in each community, Access to high-quality public education for kindergarten through high school, Access to open space and public parks and a well-developed system for recycling, Employment opportunities across different job sectors are their top investment priorities. [\(Question 4,5,6,7\)](#)
- Economic competitiveness is #1 for long-term health of our region [\(Question 8\)](#)
- CPA residents rated living in St. Louis at 6.18 out of 9 [\(Question 9\)](#)
- Trends in responses about the meaning of sustainability include economic stability and controlled growth, protection of the environment, and resource conservation. [\(Question 10\)](#)
- The two most consistent topics of concern within the City of St. Louis were education and crime. Thirty of the responses in the survey mentioned education as an issue within the city. Although many of the response simply stated that education was an issue, many of them had specific concerns about the educational system within the city. Many stated that a poor education system within the city discourages people from moving into the city unless they can afford the use of private schools. Other surveys stated that the city does not contain quality education that is affordable for all income levels. Twenty-three responses to the survey discussed crime as an issue within the city. Nearly all responses simply stated that crime was an issue, but a few of the responses explicitly stated that the perception of St. Louis City as a crime-filled city strongly discourages people from making the decision to move into the city. Although education and crime were the most frequently discussed topics of concern, many others received ten responses or more. These include racial and economic inequalities, housing, transportation, government, poor leadership, and the development of the city. [\(Question 11\)](#)

- CPA residents ranked the importance of the region addressing sustainability as 7.84 out of 9. The third highest of the CPAs. ([Question 12](#))

East Riverfront CPA

There are no responses associated with the East Riverfront CPA.

Ferguson and Environs CPA

- Expand the public transportation system to a wider area in the region ([Question 1](#))
- Most people drive alone ([Question 2](#))
- Fairly satisfied with their ease of being able to get around the region ([Question 3](#))
- Having enough diverse housing types in each community, Collaboration between local governments in the St. Louis area, access to open space and public parks, employment opportunities across different job sectors, are their top investment priorities. ([Question 4,5,6,7](#))
- Economic competitiveness is #1 for long-term health of our region ([Question 8](#))
- CPA residents rated living in St. Louis at 6.50 out of 9 ([Question 9](#))
- Trends in responses about the meaning of sustainability include economic growth, leaving a good environment and economy for future generations, and consistent standards of living. ([Question 10](#))
- Two responses stated that racial and economic inequalities were an issue and two responses stated that education was an issue. Stereotyping of North County was the concern relating to racial and economic inequalities. Responses with respect to education stated that decreasing school performance and a lack of quality schools in the Ferguson-Florissant school district were the major issues of this community planning area. Other singles responses addressed concerns over instability of neighborhoods, loss of economic integration within the community, and lack of easy-to-navigate public transportation. ([Question 11](#))
- CPA residents ranked the importance of the region addressing sustainability as 7.63 out of 9. ([Question 12](#))

Lemay CPA

- Expand the public transportation system to a wider area in the region ([Question 1](#))
- Most people drive alone ([Question 2](#))
- Relatively satisfied with their ease of being able to get around the region ([Question 3](#))
- Having enough homeownership options for all income levels in each community, access to high-quality healthcare options that are affordable for everyone, A well-developed system for recycling, employment opportunities across different job sectors and high-quality trade schools, are their top investment priorities. ([Question 4,5,6,7](#))
- Economic competitiveness is #1 for long-term health of our region ([Question 8](#))
- CPA residents rated living in St. Louis at 6.17 out of 9 ([Question 9](#))

- Trends in responses about the meaning of sustainability include affordable housing, protection of the environment, and planning for the future. (Question 10)
- Of the open-ended responses regarding community concerns, four of them dealt with the issue of housing as the preeminent issue of the community. Citizens stated that others in the community need to maintain their properties better, that rental property upkeep regulations need to be enforced, and that vacant and deteriorating properties are becoming an issue. Citizens mentioned crime, transportation, and development as issues within this area. (Question 11)
- CPA residents ranked the importance of the region addressing sustainability as 7.76 out of 9. (Question 12)

Mid-Metro 5

- Expand the public transportation system to a wider area in the region (Question 1)
- Most people drive alone (Question 2)
- Fairly satisfied with their ease of being able to get around the region (Question 3)
- Having enough diverse housing types in each community, high quality education, access to open space and public parks, diverse employment opportunities, are their top investment priorities. (Question 4,5,6,7)
- Economic competitiveness is #1 for long-term health of our region (Question 8)
- CPA residents rated living in St. Louis at 6.06 out of 9 (Question 9)
- Trends in responses about the meaning of sustainability include access to and conservation of local resources and services, protection of the environment, and access to alternative energy. (Question 10)
- The most frequently addressed issue in open-ended responses was transportation, which received fourteen responses. Lack of walkable streets, a neighborhood unfriendly for bicycle traffic, poorly maintained roads, and the need for expansion of the MetroLink system were the issues brought forth by these individuals. In addition to transportation, three other issues received nine responses, including the environment, jobs and the economy, and education. As in some of the other planning areas, quality education for all income levels was repeatedly mentioned as a concerning factor. With respect to jobs and the economy, multiple issues were mentioned. Economic instability, competition among municipalities, lack of job growth, and a lack of resources to promote economic development were the predominant issues mentioned. The environmental issues that were brought forth include maintenance and promotion of green space as well as poor air and water quality. (Question 11)
- CPA residents ranked the importance of the region addressing sustainability as 7.96 out of 9.(Question 12)

Northeast County CPA

- Expand public transportation system in the region (Question 1)
- Most people drive alone (Question 2)

- Relatively satisfied with their ease of being able to get around the region (2nd highest satisfaction rate of all CPAs) (Question 3)
- Homeownership options for all income levels, high quality education, clean air & water, diverse employment opportunities, are their top investment priorities. (Question 4,5,6,7)
- Economic competitiveness is #1 for long-term health of our region (Question 8)
- CPA residents rated living in St. Louis at 5.44 out of 9, the second lowest rating of all CPA (Question 9)
- Trends in responses about the meaning of sustainability include access to local goods and services, protection of the environment, and stable neighborhoods. (Question 10)
- Housing and crime were the main issues recorded in the question about community concerns. Over half of the responses to the survey stated that housing was an issue. Decreasing property values was once again a substantial issue within this community. Foreclosures, Section 8 housing, vacant housing, and poor property maintenance were also stated as the biggest issues facing this community. Eight individuals who responded stated that crime was the biggest issue facing their community, but only one of them said anything beyond simply that crime was an issue. One response said that there has been a drastic and noticeable increase in crime over the past five years. (Question 11)
- CPA residents ranked the importance of the region addressing sustainability as 8 out of 9. The third highest of the CPAs. (Question 12)

Pevely-Herculaneum-Festus-Crystal City CPA

- Expand and maintain public transportation system in the region (Question 1)
- Most people drive alone (Question 2)
- Relatively satisfied with their ease of being able to get around the region (3rd highest satisfaction rate of all CPAs) (Question 3)
- Having enough diverse housing types in each community, high quality education, policies to encourage clean rivers, streams, and lakes, diverse employment opportunities, are their top investment priorities. (Question 4,5,6,7)
- Economic competitiveness is #1 for long-term health of our region (Question 8)
- CPA residents rated living in St. Louis at 6.27 out of 9 (Question 9)
- Trends in responses about the meaning of sustainability include recycling, safety, and stable funding for projects. (Question 10)
- The most frequently mentioned concern within this CPA was that of jobs and the economy, which four individuals stated was the largest issue in the community. Three of the responses stated that there was an absence of decent paying jobs in the area and the last individual stated that there was a need for manufacturing jobs in the area. Transportation and crime were also mentioned as issues faced in the region with two individuals each stating that these were the major issues of the community. (Question 11)
- CPA residents ranked the importance of the region addressing sustainability as 7.45 out of 9. (Question 12)

Riverbend CPA

- Expand public transportation system in the region (Question 1)
- Most people drive alone (Question 2)
- Somewhat satisfied with their ease of being able to get around the region (Lowest satisfaction rate of all CPAs) (Question 3)
- Diverse homeownership types, high quality education and healthcare, a well-developed system for recycling, diverse employment opportunities, are their top investment priorities. (Question 4,5,6,7)
- Economic competitiveness and the environment are #1 for long term health of our region (Question 8)
- CPA residents rated living in St. Louis at 5.28 out of 9 (the lowest rating of all CPAs) (Question 9)
- Trends in responses about the meaning of sustainability include renewable and regenerating resources, living within one's means, and stable neighborhoods. (Question 10)
- The environment was the predominant issue of concern within this community, garnering ten responses relating to it. With respect to the environment, many different issues were brought up. A few of the responses stated that future development needs to be conducted with sustainability in mind. A need for recycling facilities and more green space was mentioned. One other individual stated that the community currently has an apathetic view of sustainable development that needs to change for progress to take place. The preservation of air and water quality in addition to the preservation of natural resources was the most common of the environmental issues that was mentioned by individuals within this community. Crime, education, and transportation were the other issues brought forth with multiple individuals mentioning each topic. (Question 11)
- CPA residents ranked the importance of the region addressing sustainability as 8.6 out of 9. The highest of the CPAs. (Question 12)

Tri-City CPA

- Maintain public transportation system in the region (Question 1)
- Most people drive alone (Question 2)
- Quite satisfied with their ease of being able to get around the region (Highest satisfaction rate of all CPAs) (Question 3)
- Homeownership options for all income levels, high quality education, A well-developed system for recycling and access to open space and public parks, diverse employment opportunities, are their top investment priorities. (Question 4,5,6,7)
- Economic competitiveness is #1 for long-term health of our region (Question 8)
- CPA residents rated living in St. Louis at 5.90 out of 9 (Question 9)
- Trends in responses about the meaning of sustainability include unity between government agencies, energy security, and stable neighborhoods. (Question 10)
- The two predominant issues within this community were the economy and the government and leadership within the community. Economic issues and jobs received nine responses. In addition to multiple individuals simply saying the job

market is lacking, many individuals stated that the community does not contain quality jobs or job opportunities. Six responses dealt with the topic of government and leadership within the community. Of the six responses, concerns were quite different among them. One individual felt that there was a lack of public input in government decision-making. Multiple responses dealt with public aid and a lack of accountability for those receiving it. One final response stated that the state of Illinois was gravely in debt in a manner that seemed impossible to recover from. Although those were the two most frequently mentioned issues of concern within this community, the environment, crime, housing, and education were also mentioned by multiple individuals each as topics of concern. ([Question 11](#))

- CPA residents ranked the importance of the region addressing sustainability as 7.71 out of 9. ([Question 12](#))

Wentzville-Lake St. Louis-O'Fallon CPA

- Expand and maintain public transportation system in the region ([Question 1](#))
- Most people drive alone ([Question 2](#))
- Relatively satisfied with their ease of being able to get around the region ([Question 3](#))
- Homeownership options for all income levels, high quality education, access to open space and public parks, diverse employment opportunities, are their top investment priorities. ([Question 4,5,6,7](#))
- Economic competitiveness is #1 for long-term health of our region ([Question 8](#))
- CPA residents rated living in St. Louis at 6.29 out of 9, tied for the second highest rating of all CPA ([Question 9](#))
- Trends in responses about the meaning of sustainability include renewable energy, economic opportunity, and united and stable neighborhoods. ([Question 10](#))
- The most significant topic of concern was transportation within the community. Within concerns over transportation, a majority of them specifically stated that there was a lack of public transportation options within the area. Among other concerns were significant traffic congestion regularly, roads which were not maintained properly, and the lack of bikeable and walkable areas. Although transportation was the most frequently mentioned topic of concern, a number of other issues were mentioned. These include economic issues, housing, and the government and leadership within the community, which were each mentioned by more than fifteen individuals who responded to the survey. ([Question 11](#))
- CPA residents ranked the importance of the region addressing sustainability as 7.3 out of 9. ([Question 12](#))

Next Steps

At the time the results of this survey were downloaded, East-West Gateway and Focus St. Louis were in the process of planning for the second round of CPA public engagement meetings. At the second round of meetings, residents will be presented with two exercises. First will be a tabletop mapping exercise. Second will be a poster session

where residents will be presented with posters representing the top five topical areas that emerged from round 1. Each of the two exercises will have opportunities for residents to engage and give feedback.

Draft discussion guides and questions for the two exercises have been developed with results from round 1. Results from this survey will be used to double check those questions and verify that we will be discussing all of the main issues.

A subjective comparison will be made between the similar questions on the telephone survey and the CPA short survey. This will help us differentiate local values versus regional values as we begin to formulate a vision, goals, and objectives for the RPSD. Additionally, the open-ended questions will be of particular interest. Respondents written ideas and thoughts give us a better understanding of where people stand and where they want to go with sustainability.

On-Line Short Survey Results

Zip Codes in Region: 166

Total ZIP Codes with responses: 58

ZIP codes in CPAs with responses: 45

Total respondents: 563

Total respondents from CPA zip codes: 406

The tables below are the results exported from www.surveymonkey.com, aggregated by CPA and formatted to be readable in a word processor.

1. If the St. Louis region had enough resources to address only one of these important transportation goals, which one do you think should be addressed?

CPA	Total	Expand the network of roads and highways	Expand the public transportation system to a wider area	Having bicycle and pedestrian paths for commuting and transportation	I don't know	Maintain the current network of roads and highways	Other (please specify)
Belleville-Swansea	7		2	2		3	
City of St. Louis	100	1	61	18	1	11	8
Ferguson and Environs	8		4	3		1	
Lemay	18	1	7	4		6	
Mid-Metro 5	53	1	27	14		9	2
Northeast County	28	3	12	3		9	1
Pevely-Hercy-Festus-Crystal	10	2	4			4	
Riverbend	25		15	2		5	3
Tri-City	31	3	8	3		16	1
Wentz, Lake STL, O'Fallon	163	32	53	19	1	50	8
Non-CPA	121	9	58	15	2	33	4

2. When traveling around the St. Louis area, what is the mode of transportation that you most often use?

CPA	Total	Bike	Company vehicle, driving alone	Company vehicle, driving with others (e.g., as part of a car pool)	I don't know	On foot (eg, walk, run, or jog)	Other (please specify)	Personal vehicle, driving alone	Personal vehicle, driving with others (e.g., as part of a car pool)	Public bus	Public train/light rail
Belleville-Swansea	7							4	2		1
City of St. Louis	100	9	1			2		74	6	2	6
Ferguson	8	1						6			1
Lemay	18						1	16	1		
Mid-Metro 5	53	2	1				1	45	4		
Northeast County	28							23	4	1	
Pevely-Herc.-Festus-Crystal	11		1					8	2		
Riverbend	25	1						14	8		2
Tri-City	31		2	1	1			19	7	1	
Wentz, Lake STL, O'Fallon	165	1	5		1		3	127	28		
Non-CPA	116		2		1	3	1	95	9	2	3

3. How much do you disagree or agree with the following statement on a scale from 0 – 9, where 0 indicates “completely disagree” and 9 indicates “completely agree”? I am currently easily able to commute and travel around the entire St. Louis area using the mode of transportation that I most prefer to use.

CPA	Average Score
Belleville-Swansea	5.86
City of St. Louis	5.23
Ferguson	5.25
Lemay	6.25
Mid-Metro 5	5.75
Northeast County	6.57
Pevely-Herc.-Festus-Crystal	6.45
Riverbend	4.56
Tri-City	6.87
Wentz, Lake STL, O'Fallon	6.19
Non-CPA	5.33

4. If the St. Louis region had enough resources to address only one of these important housing goals, which one do you think should be addressed?

CPA	Total	Having enough diverse housing types in each community	Having enough government-subsidized housing in each community	Having enough homeownership options for all income levels in each community	Having enough rental options for all income levels in each community	I don't know	Other (please specify)
Belleville-Swansea	7	5		2			
City of St. Louis	99	48	5	20	13	5	8
Ferguson	8	4		1		1	2
Lemay	18	2		11	3		2
Mid-Metro 5	51	32		8	3	4	4
Northeast County	28	6	2	15	1		4
Pevely-Herc.-Festus-Crystal	11	6		3		1	1
Riverbend	25	11		8	2	3	1
Tri-City	31	8	1	12	5	3	2
Wentz, Lake STL, O'Fallon	162	48	3	64	8	23	16
Non-CPA	114	48	1	35	16	8	6

5. If the St. Louis region had enough resources to address only one of these important public service goals, which one do you think should be addressed?

CPA	Total	Access to high-quality childcare options that are affordable for	Access to high-quality healthcare options that are affordable fo	Access to high-quality public education for kindergarten through	Access to supermarkets that offer fresh and healthy food options	Collaboration between local governments in the St. Louis area	I don't know	Other (please specify)
Belleville-Swansea	7		1	4		2		
City of St. Louis	100	1	10	66	5	17		1
Ferguson	8		2	2	1	3		
Lemay	18	1	7	5	2	2		1
Mid-Metro 5	53	2	8	24	2	13	2	2
Northeast County	28		5	15	2	3		3
Pevely-Herc.-Festus-Crystal	11		3	6		1		1
Riverbend	25		8	9	3	4		1
Tri-City	31	1	10	16	1	2		1
Wentz, Lake STL, O'Fallon	165	9	51	61	9	21	6	6
Non-CPA	114	9	21	48	10	24		2

6. If the St. Louis region had enough resources to address only one of these important environmental goals, which one do you think should be addressed?

CPA	Total	A well-developed system for recycling	Access to open space and public parks	I don't know	Other (please specify)	Policies to address climate change	Policies to encourage clean air	Policies to encourage clean rivers, streams, and lakes
Belleville-Swansea	7	4	1				1	1
City of St. Louis	98	21	28	6	4	15	15	9
Ferguson	8	2	3			2		1
Lemay	18	5	4		1	1	4	3
Mid-Metro 5	52	9	13	3	5	11	6	5
Northeast County	26	5	7		1	2	5	6
Pevely-Herc.-Festus-Crystal	11	2	1	2	2		1	3
Riverbend	25	9	3		2	3	3	5
Tri-City	31	8	8		1	3	4	7
Wentz, Lake STL, O'Fallon	164	38	53	4	3	13	23	31
Non-CPA	113	19	30	4	8	13	19	20

7. If the St. Louis area had enough resources to address only one of these important economic competitiveness goals, which one do you think should be addressed?

CPA	Total	Employment opportunities across different job sectors	High-quality trade schools	I don't know	Other (please specify)	Programs to encourage small business development
Belleville-Swansea	7	5				2
City of St. Louis	100	50	5	2	3	40
Ferguson	8	4	1	1		2
Lemay	17	6	6			5
Mid-Metro 5	52	23	6	1	4	18
Northeast County	26	14	3		1	8
Pevely-Herc.-Festus-Crystal	11	8		1		2
Riverbend	25	14	1	1	1	8
Tri-City	31	22	5	1		3
Wentz, Lake STL, O'Fallon	163	89	20	2	5	48
Non-CPA	115	53	10	3	7	42

8. Considering all of the potential goals mentioned in the previous questions, which aspect of the region do you think is most important to the long-term health of the St. Louis area?

CPA	Total	Economic competitiveness	Environment	Housing	I don't know	Other (please specify)	Public Services	Transportation
Belleville-Swansea	7	5	1					1
City of St. Louis	98	41	13	7	2	8	17	12
Ferguson	8	6		1				1
Lemay	18	6	2	4	1	1	2	2
Mid-Metro 5	53	22	11	2	1	7	6	4
Northeast County	27	14	6			2	4	1
Pevely-Herc.-Festus-Crystal	11	9				1		1
Riverbend	25	8	8			2	5	2
Tri-City	31	17	1	5		1	4	3
Wentz, Lake STL, O'Fallon	165	88	12	5		7	16	37
Non-CPA	105	52	19	3	2	8	9	12

9. Considering the current state of the region, tell us how satisfied you are with living in the St. Louis area on a scale from 0 – 9, where 0 indicates “extremely dissatisfied” and 9 indicates “completely satisfied.”

CPA	Average Score
Belleville-Swansea	6.29
City of St. Louis	6.18
Ferguson	6.50
Lemay	6.17
Mid-Metro 5	6.06
Northeast County	5.44
Pevely-Herc.-Festus-Crystal City	6.27
Riverbend	5.28
Tri-City	5.90
Wentz, Lake STL, O'Fallon	6.29
Non-CPA	5.89

10. What are the first concepts or ideas that come to mind when you think about the word “sustainability”?

Answers - Belleville-Swansea
natural resources and future growth; maintenance of the current level; moving beyond the current level while using fewer resources
long term economic viability Clean environment
proper use of technology
mandated programs that are not fully funded by governmental agencies
our current patterns of behavior will ensure future generations will have decent lives with clean air, water and quality of life
The ability to financially maintain - "maintenance costs" of our community assets Ecological sustainability - not destroying the natural environment for short-term economic growth
preserving resources

Answers - City of St. Louis
Fully functional system with sufficient inputs and outputs to keep the system healthy, strong and growing.
making it liveable
Environment; Renewalbe Energy
Minimizing use of natural resources. Improving the quality of life through smart choices. Preserving the best of what we have. Improving what we have.
Environmental awareness. Maximizing use of scarce resources. Re-developing older neighborhoods vs building new ones.
Environment
Lack of coordination and cooperation between government entities
Environmental sustainability, such as having public transportation access to green housing and employment.
long-term, environmentally friendly, healthy
Building cities, dense cities. The sprawl has got to stop, is killing our country economically and culturally. Greenfield development is flat out wrong.
public policies that promote environmental, societal and economic health of the region
green-preparing for next generation-stewardship
Health
granola
Environmentally friendly, efficient, cost-effective.
environment, economy, equity
future generations will have good job opportunity and quality of life
Developing and Investing sufficient resources on an ongoing basis to support infrastructure.
permeable pavement, LEED buildings
character, adaptability, community, recycle
Planning with foresight to make the best choices we can for the community, now and in the future.
As the region strives to plan for development and redevelopment through means such as the Regional Sustainable Planning grant, "sustainability" means it is important to plan for redevelopment that can be maintained at a level that is healthy for ALL residents, employees, and visitors.
not depleting natural resouces to compromise future generations.
self-contained networks, not relying on goods and services that must travel a long way to get to the area.
Consumer friendly recycling, community gardening and bike/pedestrian walkways

Sustainability to me means working toward creating a better city of the future by not depleting fiscal and environmental resources today. Finding a balance between needs today and needs tomorrow...right now it is largely tipped toward needs/wants today.
using resources wisely
Clean air, water, healthy environment
Self-reliance, local, green
Live within all natural limits, don't borrow from the future.
recycling and green initiatives
Have seen many positive initiatives lately Is only going to work when people choose to go with it-the problem is not lack of education about it, but lack of commitment to doing it
Economic stability driven by resource sustainability
Communities that encourage people to live with as low an impact as possible on both the local and global environments. Communities that encourage development and transportation that is not based on non-renewable resources.
Maintenance
Environment, economic equality/stability, food sources
Housing preservation, increased public transportation, more pedestrian & biking options
using things at a rate that allows them to exist indefinitely
Ability to maintain healthy growth over a long period of time.
low carbon footprint, pedestrian and cyclist-friendly communities, connected communities, local farming
protecting the environment
recycling, reusing, energy efficient
a great place for our grandchildren - bike paths, schools, clean world, healthy children and plants
Permaculture. Reducing waste. Reusing materials. Taking responsibility for and being conscious of our wastefulness. Preserving our historic brick architecture.
Sustainability means being able to maintain what you build.
Green initiatives, flourishing job market, adequate housing.
reducing greenhouse gas emissions to slow climate change and careful management of resources
Reduced energy consumption
less driving, more biking/walking around the st. louis area... it would lessen wear on our roads, lessen pollution, and increase health
Continued growth in all areas of the region. Maintaining and improving existing cultural attractions. Creating a welcoming environment for those who wish to come for vacations and visits.
Human beings understanding, respecting, protecting and living within the (generous!) means provided by ecosystem services. This is a tall educational/values development order, but it's an underlying need.
Best impact For the triple bottom line for both short and long term.
clean air, recycling, reusing (including rehaibilitybbing existing building stock); also social/economic sustainab
Smart Growth, Dense neighborhoods and business districts, diverse housing choices and many modes of transportation access for all.
Able to be maintained over the long term without negatively impacting future generations.
Recycling, durability, healthy
Clean water and then recycling
Having the resources needed for success and growth available in an area, and that they will not run out. Green, competitive, local, smart, growth are the things that came to mind.
Walkable communities, diversity and opportunity
local-adapted
continuing at the current or better rate into the future
food grown locally. clothes made locally.

Preserving the environment
Transit, vitality, accessibility, regeneration
Transit, walkability, reuse of existing infrastructure and buildings
long lasting
Whatever is put into place has the ability and the infrastructure to last for the next 10 to 20 years
Well-connected, environmentally-friendly, healthy, opportunities for all
long-lasting; benefits future generations (even with a possible sacrifice from current population)
Density, Efficiency, Green (literally)
Public transportation, environmental sustaining policies, excellent education, and bike/pedestrian paths.
Revolving
Able to survive and thrive with little help from others.
working together in an interconnected world long-term slow and regenerative growth
Long-lasting; uses the fewest non-renewable resources
Providing incentives for the community to support itself and neighboring communities through small business and housing development
I think recycling on the small end but also recycling building too. There are beautiful store fronts all over st.louis we just need to revitalize the areas.
promote urban living. prohibit sprawl. promote public transit not only through providing it as an option but limiting the expansion of highways and interstates in the St. Louis area.
Able to be maintained for several generations.
being able to use public transportation or bikes to get to where I need to be
Taking less than we give Using only what can be renewed Renewing used things to avoid additional resource extraction and processing efficiency first a dollar of prevention is worth a hundred dollars of cure. bringing balance back to the landscape
Planning for the long term
Ability for the region to create job opportunities for its residents and attract major companies while still providing a healthy atmosphere for small business development.
grow your own food.

Answers - Ferguson and Environs

Long-term healthy growth
Maintaining a quality environment for all and future generations.
that people too often use it as a buzz word for selling something new; that real sustainability challenges the way we live, work, commute, and most certainly consume resources (including food)
more pedestrian/bike dedicated paths
being able to continue a constant and solid standard of living and doing business - live local, buy local and play local
economic growth potential re-utilization of resources
I think about not using more than one needs, growing vegetables, recycling, energy conservation.
Building things that are easily maintainable, and affordable.

Answers - Lemay

affordable housing/ability to maintain your own home, low interest mortgages, etc...
maintain roads
Always a good plan but nothing ever comes of it!
To be able to maintain community involvement and keep moving in a good direction for our community and grow...

ability to support / to validate
Fundraising events (such as a weekly neighborhood bingo) to raise money to help with the upkeep of property in the immediate area. (ie. lawn care, snow shoveling, exterior painting, etc)
Maintaining the planet through safe water and more equality of wealth.
Maintaining the planet through safe water and more equality of wealth.
lasting, high quality
housing
raising our business population so that they can contribute to our community in taxes & jobs
Renewable, naturally produced energy.
Planning
In reference to what? The economy as a whole needs a moral booster. Employers should have more respect for Job seekers, especially those who are willing to take a pay cut to have a steady income. I'm tired of people saying "They would not hire me because I made too much at my previous job." Employers need to think twice before saying I can't use you.

Answers - Mid-Metro 5
Ensuring we don't over-use our resources, so there's enough left for future generations
Meeting our current needs without impacting future generations
Alternative forms of energy, energy conservation, diverse economy
environmental design that doesn't negatively impact our future
Being able to have ease of access to basic needs.
walkable neighborhoods, public transportation
not using more than you need, using what can be replaced in one lifecycle of what is being used
Ability to continue same or better quality of life in our community
recycling, eating local, green space, renewable energy
having solar/wind power for home & car, growing my own food, raising chickens
environment - elimination of coal-fired power plants and decommissioning of nuclear power plant - clean water - clean air - mass transit - green space - economic diversity throughout municipalities and neighborhoods
Funding education so those in school have the skills necessary for employment
Having someone from a foreign land command what I can do with my property and how I must live my life with only approved large corporations granted the power of eminent domain to force the common people off their land at tremendous cost to the person and private property rights for the common good as deemed proper by someone who likely doesn't even live in this country.
living with what you have. not consuming just to consume. giving back to nature what you take out.
self-sufficient
the ability to shop, travel, receive health care, access to parks, all within my community.
stability plus growth
long term goals for attracting current and future generations to the region. staying ahead of trends tackling issues like crime, homelessness, image, infrastructure, transit, etc.
Long-term solutions in transportation, preserving the environment. Overall efficiency.
Community Garden, Farmer's Market, Less Packaging/Plastic Bags, Mindset Regarding Travel Options
Using renewable resources at a rate that does not decrease the resources.
Environment, community and business
Green energy like solar and wind, and also energy savings like insulation in walls and windows - recycling for all apartments (maybe some type of credit for the building owner if they don't use the landfills as much - many recyclable objects are just tossed in the dumpster where I live including electronics)
Local gardening - why not allow communities to develop open lots currently owned by Metro by Hwy 40 as

community gardens, for example? Also, better and safer access for walkers and bikers to business areas. Incentives for improving health including weight loss. More subsidies for green energy improvements. And cover open lots like at the promenade with solar panels - generate energy plus reduce heat load on parked vehicles!
wise use of resources so that they are available for future generations
Mutually enhancing human-Earth relationships
Triple bottom line. Cyclical thinking - not linear...waste from one system is the fuel for another. Integration and diversity (on all fronts) promotes sustainability.
Triple bottom line.
Economically sound development practices which build infrastructure which is supported in the long run by the tax base that they serve.
The ability to endure, grow and develop.
Wise use of natural resources with the emphasis on using more renewable and less non renewable.
initiated, maintained and consistently maintained with quality and replicatability
Ability to maintain and expand important projects that benefit the region. More specifically, I think it's hard to define sustainability unless your talking about a specific subject area.
Triple bottom line, walkable communities, preservation and improvement of the natural and built environments, resource conservation, use of renewable and alternative resources, support of local businesses and products, green schools - teaching the future generations about sustainability, fostering connections with the outdoors
Phasing out subsidies for mono-crop mega-farms. Bicycling as a major transportation mode share across the entire population. Walkable communities. Energy efficiency.
Diversifying the electric portfolio of Missouri. Stop transporting coal from Wyoming. Sustainability benefits: 1) Reduce air pollution 2) Reduce impact of coal fired power plants 3) Economic Sustainability too with clean energy jobs.
Able to go on for a long time. Stable and resilient.
closed loop systems, permaculture, non-gmo agriculture, solar & wind energy, community gardens
manage social, economic and other requirements of today to enable future generations to enjoy what we have now.
Opportunities for senior citizens
Elected leaders reflect expectations of the people who elect them.
Able to maintain housing, food, and healthcare within my income.
Deteriorating sewer system - if we're to sustain clean drinking water, we need to replace old sewer lines, no matter what the cost
Having "real jobs" with benefits (not retail jobs), good public transportation, well educated work force (good education systems), diverse mix of housing, access to parks and opens spaces, clean air and water, reasonable cost of living, honest and fair government
Fear of having my property taken from me by eminent domain. Having "real jobs" with benefits (not retail jobs), good public transportation, well educated work force (good education systems), diverse mix of housing, access to parks and opens spaces, clean air and water, reasonable cost of living, honest and fair government

Answers - Northeast County

nationalized resources and some kind of plan
Roads... Infrastructure... Tax Base...
North County will not survive in this current state if we do not limited section 8 housing
major grocery store & rec center
caring for the environment
community working together
longevity financial support
keeping homes, subdivisions apartment complexes clean, neat and in good repair
jobs

Good permanent residents of the area
People staying in the local community. Everyone being gainfully employed in or out of the local community. Everyone taking pride in the community.
Environment
Keeping something going, not being destructive.
Farming, producing food locally is what comes to mind first. I am all for it, especially if it is GMO free and organically grown. I think the family farmer is nearly extinct. The food industry and grocery stores need to step up their game and provide us with healthy food that is free of GMO's, free of pesticides, and free of chemicals. Pay a decent wage to work the fields and get rid of all the deadly chemicals and maybe the unemployment numbers would drop.
withstands the test of time and political upheaval
can be sustained for many generations without depleting the resources that future generations depend on natural/agricultural resources
Reducing energy use and finding (and funding) alternative energy sources such as solar power.
Long-term livability
Without clean water, soil and air, nothing else would matter.
education, maintaining and improving the infrastructure, business and employment
"Not" consuming a community with unsustainable subsidized housing, i.e. spanish lake!
Keeping our neighborhood strong & safe
self sufficient within budget constraints

Answers - Pevely, Crystal City, Festus, Herculaneum
Maintaining economic, environmental, and social stability.
Safety
maintaining funding for a specific program or service
Money, how do we afford something to sustain it. What will the revenue stream be to sustain something
Recycling, reusing, resistance
revenue stream
Making changes to update ourselves in all areas.
LONG TERM PERMANET JOBS
Agenda 21 - Attempting to install Global Environmental requirements one local community at a time.

Answers - Riverbend
Self-Sufficient
Environmentally friendly
balance of use and regeneration of resources
jobs
healthy, vibrant, flourishing, prosperous, collaborative
Easily renewed.
continuation; maintain
mindful use of resources.
Building new facilities with an eye towards reusing materials that can be reused, developing infrastructure designed to collect rainwater and make use of both active and passive energy sources.
best possible use of resources for the good of the entire community

Recycle, Reuse, Reduce
Developing a plan of action to benefit the welfare of all forms of life including the planet
healthy lifestyle options, recycling, energy efficiency, improving or changing the materials that we use
Not outsourcing jobs.
Using our environment that will best sustain us, environment clean up, using our land for best use. ie farm land should stay farm land. Better use of resouces. Go green using solar/wind energy to lower our carbon footpring.
Living within my means, less impact on the environment and providing myself and family with our own food, power
"sustainability"-an overused term with vague connotations of being "environmentally friendly." Often associated with corporate or government greenwashing. On a less cynical note... since to "sustain" implies the ability to continue with something, the acknowledged need for sustainability is an important admission that the risk posed by current paradigms is too great. At the very least we don't want to continue rushing towards our demise. A sustainable ecosystem, community, or business has enough strength and diversity to survive. Adaptability. Environmental and economic sustainability should never, never, ever be separated in conception or action. I want to see our communities thrive, not simply sustain.
renewable energy
Systems that have the ability to function independently without the need for intervention from government resources
Living in harmony with our community and the environment to decrease our carbon footprint and reduce wasteful and pollution causing water uses.
Able to maintain something without sacrificing resources or ruining something else to maintain that thing.
Not trading off long term security and common interests for short term exploitive gains that serve a narrow band of self interest.
The abability for the community to survive economic downturns
environment, economy, fiscal

Answers - Tri-City
enduring, self supporting
An economy that can make it through hard times.
Job Market Housing affordability
I believe that members of the community that are on different types of governmental assistant programs should be held accountable providing drug tests, job searches, and being accountable to stop abusing the system. They should be held accountable for their on sustainability, with governmental agencies having a limited amount of time to encourage people to their heads above water. Governmental programs were never intended to be a way of life, and it is time that people using those programs be held responsible for what they are getting. Otherwise, all taxpayer money should be suspended, so that people get a hand up, instead of a guaranteed way of life.
THE CONSTITUTION!, ENERGY DEVELOPEMENT-LIKE DRILL,DRILL,DRILL& A GOVT SOLAR PANEL FIELD OF AN ACRE OR MORE.
Air quality
Jobs and attractions that would draw more families to the area to live. Or at least tourism
The committment of concerned citizens working together to make a better community that will endure
Combining all areas of tax supported agencies that have common goals but different approaches to reaching them. ex: Townships, school districts cities etc. They nearly support local "fiefdomes" that can no longer be justified in our changing environment.
Full employment, "living wage", public education
Energy (all kinds electricity, gas, oil, human, etc.) Tenacity
Things that will last and allow us to thrive
More convenient and easier recycling programs, less use of plastic bags/more plastics recycling programs, solar energy. I believe that a well-developed recycling program and investments in alternative forms of energy (such as solar energy) could help create new jobs.

economic/business stability
Jobs
Maintaining our current standard of living but in a way that attempts to conserve our limited resources. Through recycling, developing and mainstreaming alternate forms of renewable energy...
Renewable energy.
Regional collaboration: regional tax, discontinue TIFs and Enterprise Zones which benefit corporations at expense of the residents. Consolidation of governmental bodies and school districts
acting and making decisions in a manner that will ensure the protection of the environment--water, air and land--and the viability of plant and animal life. living for the 7th generation.
JOBS

Answers - Wentzville, Lake St. Louis, O'Fallon
regulation Costs environment
reducing fossil fuel traffic
Mobility Management and Coordination in the area of transportation
Leadership taking responsibility by listening and collecting data on individual lifestyles such as this to make professional decisions for the people and keeping the politics out of it.
Moderation in use of our resources. Looking out for the common good.
Lasting
The ability to provide the same services with no additional revenue
Jobs. Getting more businesses here.
DIVERSITY
Locally grown food
Eco-friendly; recycling; re-purposing;
Jobs and housing
renewable energy
Low unemployment. High-quality education. Respect for environment.
environmental whacko's pressing a personal agenda upon the masses
Recycling, re-using; going "green"
natural resources, lakes, rivers, woods, land in general.
recycle
that our towns can each stand individually, but, work well in collaboration with other towns while keeping taxes down.
solar energy
renewable energy, public transportation
Recycling, local farmers markets, energy conservation
not st. louis
State, county, city budgets
Keep on keeping on
being able to make life comfortable for work play and housing for all
WHACO'S
government control, regulations, loss of personal freedom, impoverished living
Being self-sufficient and able to maintain an acceptable level of living; not degrading, nor relying on others.
clean air, water and nature for future generations
What you need to survive.

Recycling, buying locally, metro link
economy
Jobs, Housing, Family environment
natural resources oil
The ability to maintain a certain standard within a community over a period of several years, while being self reliant from outside assistance.
Recycling
Keeping up with the population, whether it be roadways, schools, services, etc.
Energy
jobs, housing, environment
allocating existing resources effectively
Local community gardens
idk
Environmentally conscious; renewable; recycle
Reducing a dependence on motor vehicles is a key concept in sustainability efforts. Communities are getting this right all the time by creating pedestrian friendly spaces and community events which encourage loyal local shopping and healthier lifestyles.
Maintain a viable business community, with trained people who want to work. This will grow the entire urban area.
recycling
Stay in your budget!
keeping business from leaving and growing new business
Code word for politically correct but more expensive way of doing things.
regulations
Life Cycle Costs!
Job sustainability -- Loosen the government regulations on the small businesses so they can afford to expand and hire additional employees
The concept of sustainability that comes to my mind is that we must address the economic conditions but also the environmental impact on development. If we ruin the environment everyone's sustainability is 'down the drain'
the integration of environmental, economic, and social networks to endure individual well-being and satisfaction and living within nature's limits.
Government unfunded mandates.
recycling Life cycle costing
whether we can keep up with the growth in the region, as in roads and transportation
County to be able to provide basic services during tough times to its residence
Energy efficiency and renewable energy technologies.
Economic side, all public improvements must be able to be maintained over time.
land use
Built to last at little impact on the environment
MORE TAXES
Build things to last, put a greater effort in the planning and offering a quality product, "do it right the first time"
stewardship of the both our environment and the economic base/growth for future generations
once a system is in place it has the funding and manpower to continue
recycle, reuse, regenerate
Good economic development
Being able to afford to maintain what you have whether it is roads or housing.
maintain infrastructure

hold your own...keep up with current trends, opportunities, all within your comfort zone
better transportation network, particularly for seniors and physically challenged
something that can be used, but replenished in using it
conservation, protection of natural resources
Being able to keep up or maintain what you have.
jobs, education and well being of people
Being able to maintain all aspects of current situation
Enough jobs in the community.
quality environment
not enough affordable rental housing
The ability to build and maintain so to not create undue hardship on the tax payers while attaining quality infrastructure.
an infrastructure that can handle the growth we see continuously. Roads cannot handle what's out there.
Living within ones means and being mindful of everything one uses and how that impacts the rest of the world.
ability to keep a community alive and active for a durable period of time without relying on another group for survival
Jobs
Self-sustaining systems on a very small scale, but replicated many, many times. Like every house having some kind of wind-energy harvesting device (i.e., small rooftop windmills) that wouldn't mean much individually, but as a collective would have an impact on cleaner air. (More wind energy plugged into the grid = less coal burned). Most sustainable things are not done on a huge scale. I also think of things like PaveGen...a sidewalk like converts footsteps into electrical energy.
That we can continue to grow amid all economic climates
recycling
Affordable housing
Energy conservation
Can make my house payment and pay basic bills?
great economic opportunity
The ability to continue to live in a community that is safe, clean and affordable.
doing something with an ongoing and long lasting impact...
Environmental issues, recycling programs, clean water programs, etc.
Economic growth
The ability to upkeep what you have.
Having a local co-op or gardening system to grow healthy, organic foods.
Recycling of MOST things, including Styrofoam and chemicals.
status quo, need to advance not just sustain
Conservation of resources, like energy
clean air & water, public education, safe roads & bridges, manufacturing jobs, affordable healthcare
environment
Health
Will my life style change?
Using resources wisely with a mind on replacing them. Recycling.
recycling program that offers jobs to members of the community; crops grown locally, sold locally
having enough resources (fresh water, food, etc.) to continue to support communities without destroying the environment
Long term solution to multiple problems, particularly if included with local economy.
funding improvements to and maintaining infrastructure

Long term planning for our children and their children. Putting systems in place that make sense for now and long term.

Jobs, transportation, make the airport a major hub again.

Answers - Non-CPA
Minimizing impact on environment
Clean air, public transportation, reducing our dependence on foreign oil and non-renewable resources
Sustaining the community through people, plante, profit.
low maintenance, using up as few resources as possible, leaving something for the next generation, green, energy efficient,
Fairness. Re-developing the inner city as opposed to constantly building west.
Education - community and students
Green growth
Green manufacturing and food production; recycling.
Using the resources that already exist to maintain and improve our environment.
jobs, planning, citizen involvement
Living simply with no harmful chemicals and with clean air and water sources that produce local organic food sources.
social, environmental, and financially responsible
Network of local food providers and local food consumers; green housing and business design; researching affects of climate change on agriculture, our waterways, etc.
reduce, recycle reuse
longevity
able to maintain without depleting economic, natural or social resources
redeveloping already existing commercial areas
A catch word that depicts an ideology that is not always enviromentally friendly. If you look at the big picture, the actual impacts of some items, like their manufacture, maintenance and replacement, there are often more overall negative impacts enviromentally and ecomomically.
"marketing gimmick appropriated by businesses like Clorox"
The things we need for a good standard of living will continue to be available into the future because we have planned and cared for their use and reuse or developed suitable alternatives.
environmental quality, fiscal sanity, responsible land use decisions
Green development, buildings that last a long time, integrated systems, urban gardening/orchards
- Energy Efficiency - Nonmotorized transportation - Plant a tree
The sustainability of growth and communities.
Ensuring a safe, healthy and environmentally responsible community for our children and generations that follow.
Being able to maintain our city's natural resources.
using the resources most readity available to us in the most efficient manor, to enable the future use of the same resources.
Green Building, Recycling, Energy Conservation
clean air and clean water
keeping the enviroment around for my kids kids
Public transportation, urban farms, community living and programs, filling in and cleaning up cities rather than moving outward.
recycling, mass transportation
not depleting natural resources
Long term
economical use of resources

long-term wholistic regional environmental local
USING ONLY WHAT YOU NEED
Green infrastructure
Are we wrecking our environment? How can we improve the best features and reduce there other characteristics of the region?
being able to take care of ones' self, without putting pressure on those of the future
Maintainence of programs & services
being a good steward with the resources you have been blessed with
Going Green! Lowering your Carbon Footprint. Being able to sustain the environment for generations to come.
continuity
Communities that will be viable in the decades to come because they are walkable, pedestrian friendly, there is a sense of place and have a diverse range of land uses.
Ability to think of long term solutions, be it ecomonic; housing stock; or employment opportunities. What will "sustain" pur community well into the future?
The region has surpassed sustainability. Saint Louis needs now to cease development and vunnel nunds towrds conserving the resources we have: using current bulding stock, cleaning up our environment, and expanding public, transportation.
Boondoggle. "Feel-good".
ECONOMIC STABILITY
We need to sustain our community - jobs should be priority ONE. Question 12 is difficult to answer without defining sustainability.
Green, recycling, parks, MetroLink, and the environment
longevity, something maintainable under its own momentum
walkable communities, clean air, jobs that support a sustainable community
Coordination of Environmental, Economic, and Social goals in development.
Jobs & Transportation
actually fixing a problem instead of patching or passing the buck. nobody cares whose responsible just fix it so it doesn't happen again.
Being able to keep the population here by having enough jobs.
Better overall planning in terms of transportation, housing, employment, urban revitalization etc. TOD, bike trails, mitigating destructive highways, more trees and planting etc.
tying economic growth to reducing environmental impact. st louis could lead the rust belt states in ecoonomic revival if it better leveraged the communication infrastructure/economy we have here--Machine 2 Machine communications can revolutionize a local economy; create all sorts of new economic oportunites; and, reduce the region's environmental impact. and, if we moved first--we'd have a "first mover" advantage that would allow us some great branding opportunities that we could promote to help bring in a younger demagraphic for long term economic and vibrancy of the city
accountability, transparency, reduced consumerism
Meeting the needs of today without compromising the needs of tomorrow
Residential efficiency, transportation (public)
long term success
Sense of place and pride for where you live/work/play.
A community that is vital, viable and can succeed and grow and accommodate the needs of all its residents.
strong retail/commercial tax base to offset burden to homeowners find way of reducing number of commuties condense or merge transportation (light rail) that connects all cities
Government interference.
support from a broad range of community and government bases.
Efficiency, practicality, long-term, future-focused
The ability to continue a program after the original start up

Recycling and going green
Environment
Economically viable without government aid. Tax breaks for wage earners and business owners. Combat inflation through increased domestic oil production.
Will be around for a long time
balance conservation
resilience, energy independence, walkable
Personal responsibility, even in business contexts, for leaving places and things better, now and looking to the future, than you found them.
We do not borrow the earth from our ancestors, we borrow it from our children. We must learn to refuse refuse, before we reduce, reuse & recycle.
Maintain, expand
long-lasting
Living in an area that is able to respond to the needs of all and to be competitive with other areas of the country.
social equity
Long-term healthy growth
Maintaining a quality environment for all and future generations.
that people too often use it as a buzz word for selling something new; that real sustainability challenges the way we live, work, commute, and most certainly consume resources (including food)
more pedestrian/bike dedicated paths
being able to continue a constant and solid standard of living and doing business - live local, buy local and play local
economic growth potential re-utilization of resources
I think about not using more than one needs, growing vegetables, recycling, energy conservation.
Building things that are easily maintainable, and affordable.
the ability to maintain
the need for a broad understanding that economics and environment shouldn't be on competing tracks. Economic and environmental concerns go hand in hand. Without strong environmental policies & practices within economic policies, development and financial growth in our area is unsustainable.
Mass Transit, High Density Development, Walkable/Bikeable communities, mixed-use development
Green Buildings
long term maintenance of resources and responsible design and building
Making decisions that meet your present needs without compromising the needs of future generations.
recycling
less dependent on foreign trade
quality environment
efficient use of resources
enough people to support the light rail, retail, and businesses in the region
Communism.

11. What major concerns do you have about your community?

Answers - Belleville-Swansea
would like to see more traditionally designed areas in the st. louis region (i.e. grid street pattern, walkable, etc.). conversion of existing development to this type of pattern should become a priority.
They don't have a good handle on the housing stock. What is the actual % of rentals in our community and where are they? How can we actively get people into vacant homes?
Sprawl and vacant buildings
State of Illinois is broke, not paying their bills, pushing small businesses/not for profit agencies as well as larger businesses into debt to act as the "bank" for the State of Illinois until they pay their bills
backward and anti-scientific attitudes, values that devote time and attention to sports and t.v. but not to public engagement on issues that matter
The decline of the real estate market, stagnant job growth, long commutes and rising gasoline prices, deep cuts in public education spending despite higher taxes
infrastructure, schools, govt

Answers - City of St. Louis
Lack of courageous leadership to challenge the status quo, take bold steps and innovate to create the changes necessary to keep the community relevant as a national participant in the national and international economies. Little appetite for change and complete failure of its benign neglect policy that has left more than half of the city and inner-ring suburbs in land mass and people as non-performing assets. Therefore, our liabilities outweigh our assets=negative net worth. Massive investment is needed to turn this around.
crime
Poor pedestrian planning
We have not changed with the times. Our road system was built for cheap gasoline. The city street system was built for the 1950's and we have different needs today. We need to make smart choices on adapting for the future.
Lack of re-investment in older neighborhoods. Building new roads & bridges and not maintaining existing ones. The lack of a decent public school system in the City. The inability of governmental and business organizations (and there are too many of those) to come together and really solve the problems we face. The continuing emergence of race as being behind too many decisions that adversely affect the whole region.
Education
Concentrated poverty=crime
city and county need to merge St Louis region is very racist St Louis Public Schools need to be fixed St Louis has inferiority problem - needs to think outside the box and actually make change
Fragmentation, by far the biggest concern. People not thinking about how we address the issues of our time together, as one region. Ladue is not separate from N City.
Lack of ubiquitous public transportation, poor land use policies, concentration of environmentally harmful conditions in low-income areas, no coherent energy efficiency efforts, backwards views regarding value of sustainability
water-take it for granted
1) Disparity in opportunity(race & class) that determines/impacts health, education 2) Lack of political leadership on key issues
crime, education, jobs
Education and jobs.
poverty, schools, not enough transit
K-12 education; safety of citizens living in depressed areas; poor use of taxpayer dollars - targeted incentives and favoritism of special groups (ie firefighters).

We need to commit to improving the lives of all people in the region, in particular those living in poverty - in our region people try to move away from communities with low income and minority populations. We don't have a sense of responsibility for our fellow citizens. We have too many municipalities and local governments making it too difficult to create regional economic development.
vacant commercial space—lack of economic activity
1. Poor public transportation. 2. I am worried about South Saint Louis City reaching a critical mass concentration of poor and dysfunctional people. A burgeoning sustainable diversity there and an example of new urban enthusiasm could be overwhelmed by pushing its most vulnerable people into one area. I am worried about a large scale project on the North Side causing fast, mass migration to South City. I am worried about Housing policy facilitating this move systematically.
Poverty and equality of opportunity - in housing, employment, and education. Also, when we strive to redevelop communities in St. Louis, I am concerned that any gentrification will ultimately cause displacement of lower-income or long-term residents, due to factors such as a shrinking level of affordability. Subsequently, if not planned properly, one low-income area that has gentrified will displace its residents to another area, leading to a new area with a concentration of low-income residents. It is important to plan in ways that will raise the livability levels for all residents, rather than displacing or spreading low-income residents throughout the city and county.
educational and job opportunities, lack of walkable neighborhoods, too much fractionalism at the neighborhood, city and regional levels.
Safety, parental involvement, transportation.
The public school system. It is in bad shape and doesn't attract people to stay in the city.
Lack of public transit, lack of good schools
segregation of whites and blacks as well as wealth and resources between north city and south city lack of quality public education for children who don't have parents who know how to and are capable of accessing the top tier public schools lack of affordable healthy food for lower income families the overall waste that comes from a disjointed city and county government
Crime, building violations, clean streets and alleys.
Lack of high quality public educational system. City and region will not grow until educational issues are dealt with.
Unemployment rates are so high, even for degreed professionals!
Weather changes from global warming.
Too much diversity and low income individuals bringing down property values.
Crime level/safety is still the greatest issue that holds us back as people fear making an investment in Shaw due to too many criminal sorts who live here, and the general malaise of the city alderpeople and the courts to hit it hard. Less sympathy for criminals who are caught, more jail time and less probation. Once people do not fear where they live all the rest will come up---llok at St Louis south and west county to see this in action.
Education. Interference in local affairs by the state. Car-centric planning.
Access to high quality education for people of all income levels and access to nutritious, fresh, and minimally processed food for people of all income levels.
Deterioration of homes, crime, neglect
Access to high quality education, quality housing for all income levels (i.e. cracking down on absent/irresponsible landlords), environment (less trash, more recycling, limited use of chemicals, etc.)
lack of public transportation other than buses. lack of quality, PUBLIC education, lack of retail establishments in north city (restaurants, grocery stores, gas stations) which leads to a lack of employment opportunities
Absent land owners and the lack of city removal of snow and ice in winter.
I am concerned that there are not many affordable high quality schools for our future children in the city of St. Louis. I fear that there are others like me who will have to make a choice to spend a lot on private school tuition or move to the county. I prefer to stay in the city, and I hope that others share my preference.
Deteriorating housing stock.
poor public education unequal access to health care
safety, poor schools
city-county friction, poor city government acting on the North Side selling to Paul McKee, lack of dollars spent to encourage alternative energy sources.

Crime, copper theft, homes and cars break ins
The disconnect between city and county. The accessibility to and affordability of locally grown real food for all.
The environment is the biggest factor. You cannot live without clean air and water. There appear to be many people who do not care for their environment and this is evident by the amount of trash seen throughout the city. I have never seen such a dirty city.
Safety, but that is much better now than it was 14 years ago.
Crime
personally safer pedestrian and bikeways are the greatest concerns. investing in economic development and public education will help make the city more desirable to additional populations, though, and in the end this might allow for more investment in public and non-car transportation.
Political dysfunction within City and in the City/County divide; City government does not seem to have a good grasp of how neighborhoods are built from ground up instead of pursuing large flashy projects; what appears to be a recent increase in random violent acts in neighborhoods
there is very little AFFORDABLE access to fresh, healthy foods and good schools in the city
Abandoned and badly maintained housing which drops my property value and pulls down the appearance of the neighborhood.
Continual cuts to social service resources for elderly, poor, support for obtaining secondary education - disparity in K-12 educational quality across the region - extreme views of political right-wing.
Competition between municipalities is driving sprawl and forcing density loss. Density is needed to have thriving society and economy.
lack of transportation and predominance of racial and economic segregation
Public Schools underachieving, automobile dominated transportation system, and crime.
The lack of collaboration between local governments (why do we have so many municipalities? Seems very wasteful to me...), the lack of good public transportation (Metrolink barely covers the main areas of the City, let alone the County or IL), lack of good/safe bike routes to encourage bicycle commuting, and continued segregation and the effects it has on those communities (North City/Wellston specifically).
Crime and education
Segregation that is perpetuated by lack of public transportation and workforce immobility
Perception. St. Louis has a lot to offer, but there is a perception that there are no good schools in the City, that the City is unsafe, that people are not moving into the City. I feel that there are good educational options...although more are needed, that the City is becoming safer and that people are moving in to be closer to work and all the other benefits of city living.
Lack of employment
Overall (not specific to my community) lack of diversity and overall attitude in St. Louis when it comes to diversity.
parochialism keeps us moving backwards, not forwards.
Economic viability within the community--and its effect on crime, community attractiveness, condition of infrastructure, outside perceptions, livability, social justice.
corrupt mayor owned by billionaire rex sinquefield
Need local businesses that actually serve our area.
Arcane ordinances, corrupt insider politics, unwillingness to embrace innovative ideas, debilitating and undeserved inferiority complex
Unhealthy, wasteful, declining
Public safety and education
Not enough fore thought into how systems collide together. Everything, from where housing is built, to the discussion about education, effects all other systems.
We need to protect and improve the resources that we have - our housing stock, our amazing rivers, open space, parks.
Lack of respect for human-life; lack of time outdoors

Education
Education quality and promotion.
Economy, Crime, Public Education
Crime, job loss, abandoned buildings
racism, classism, unequal enforcement of quality of life ordinances, cronism, education, housing quality and access.
Perception of Crime Non-supervision of Youth
Incentives for renovations of dilapidated and vacant buildings in the area.
EducationEducationEducationEducationEducationEducationEducationEducationEducationEducationEducationEducationEducation
ineffective school system that perpetuates a cycle of poverty. lack of progressive vision held by stakeholders and our region struggles for relevancy as a result of the conservative mindsets here.
Lack of affordable quality education. I know so many people who leave the city for this sole reason. Sucks!!
vacant housing and crime
health obesity
Not enough trees Power lines should be underground Efficiency isn't being aggressively pursued the way nuclear and coal are. Missouri seems to always be about 10 years behind on implementing good ideas. The state legislature is not representative of the population in Missouri. Floodplain management is abysmal, I can't believe how much development has taken place in areas that were well underwater in 1993. Food security - if we have a strong network of community gardens and farmers markets we will be better able to deal with a food shortage situation. Right now there are only a couple of days worth of food in St. Louis. If people were gardening and canning, as simple as it sounds, we would be much better able to deal with things like natural disasters or crop failures that may impact the food supply. Nutrition and Education are tantamount to any community and our suffers greatly because the same places where our education system is failing we find food deserts. Poorly nourished, poorly educated children is nothing to be proud of. Our city is completely designed for cars, very few areas are walkable, bike lanes are few and far between. I see most of the bike lanes on roads like Olive or Lindbergh that you would have to be crazy to ride down.
need good quality public schools to attract families
The lack of communication and cooperation between independent municipalities compounded by the lack of cooperation between the city and county.
crime

Answers - Ferguson and Environs
Apathetic Elected Officials
lost of economic intergration in the community
lack of easy-to-navigate and fast public transportation routes the proliferation of chain restaurants and businesses vs. independently-owned and -operated the need for farmland preservation
To be honest, ethnic problems
the instability of neighborhoods- the lack of permanacy of residents leads to increse in crime and decrease in school performance. Also the imbalance of services such as road repair and police presense in "poor" neighborhoods
none
I am concerned about negative stereotyping about the North County community. Most of the residents are hardworking and contribute to the greater good of the community, however public opinion and the media paints NOCO as a wasteland devoid of culture or civility.
I am concerned mostly about the quality of the schools in the ferguson Florissant school district. I wish I could send my kids to the language immersion charter school in STL city.

Answers - Lemay
crime/drug use, homeland security
air pollution
People need to take pride and keep houses clean and maintained.
Safety and growth
Need for activities for youth; clean up the neighborhood
the lack of money available to home owners to fix up there house.
There seems to be NO enforcement of rental property upkeep. You can drive through my neighborhood and pick out the rental properties.
Currently, our River Casino has offered to develop an attractive environment for the area surrounding it. It bothers me that they have done little to remove rusty construction equipment that was apparently used when building and then forgotten. It needs to be removed from as soon as possible, but especially before the opening of the Jefferson Barracks River walk project anticipated to be completed in July, 2012.
Currently, our River Casino has offered to develop an attractive environment for the area surrounding it. It bothers me that they have done little to remove rusty construction equipment that was apparently used when building and then forgotten. It needs to be removed from as soon as possible, but especially before the opening of the Jefferson Barracks River walk project anticipated to be completed in July, 2012.
road infrastructure
housing, streets, sidewalks
Right now my major concern for the Lemay area seems to be the lack of our laws not being enforced. It seems like government/police are turning their heads to problems in our community. Some of these problems seem small but I feel if left unattended to they just grown into large concerns
vacant and deteriorating properties.
Quality education and quality jobs
Revitalization: The original business buildings along Lemay Ferry need a major overhaul. After the flooding we've had since 1993, they are a disgrace to the original thriving businee district.

Answers - Mid-Metro 5
Better access to local fresh foods, esp in inner cities; better public transit, integrated w/ bike lanes; lack of coordination among local govts; lack of green space in inner cities; lack of jobs to attract/keep young people; stodgy thinking.
Economic decline due to in ability to make public investments in education and infrastructure
stormwater and sanitary sewer runoff polluting the surrounding waterways and inadequate water management causing flooding
too many small towns making it hard to impliment change...power will start shifting to the county.
Decline of small business in the area and number of unoccupied store fronts.
not walkable, no neighborhood community
The divided-ness of all the municipalities in the St Louis area. Duplication of services and too many upper level management level positions rather than workers performing the services needed.
Education Economic stability
Education, traffic - lack of green space, encroaching commercial areas
We need more diversity in businesses within walking distance in the area such as more affordable antique stores, flea markets, craft stores, book stores and unique shops. Walking across Hanley doesn't feel safe.
way too many roads and more roads and more roads - After all these years, racism remains a serious problem
People and politicians thinking small, not looking at the big picture or thinking about the longer term.
The local leaders will be seduced by the money from these grants bring lacking the foresight that once they commit to the strings that are attached to these grants they will foolishly appoint the unelected councils that are insulated from the voters which will then go about the business of implementing Agenda 21 with it's communistic control of everyone everywhere.
too profit oriented. not enough community togetherness. too little emphasis on environment and not enough

transportation options that are environmentally friendly.
lack of fast, efficient public transportation to ALL areas of the county.
the decline of the city of St. Louis. programs get instituted that don't seem to have any real lasting impact.
Low-risk/conservative investment mentality that has kept the region from missing out on previous booms. St. Louis has an image problem. Crime is relatively low but nationally it is perceived as a high crime rate. We still have a culture of promoting urban sprawl via directing tax payer resources in building wider highways and other infrastructure in less dense areas while neglecting an aging grid. Higher taxes in St. Louis County also contribute to sprawl.
Crime / Public Safety
No access to a local community garden, Mindset regarding driving habits
Education
RH has no true identity. It is not easily walkable and desitnations of interest are lacking. There are very few small businesses which can make a town vibrant and enticng for all ages. Now it looks like we are going to get involved with big boxes with 40 ft walls (an eyesore, not a solution) We should learn from our neighbor's successes and failures, get creative and act in a sustainable maner to promote RH and surrounding cities.
Not enough affordable housing - if you're not making a lot of money, you should still be able to live in affordable, safe, and inviting communities with opportunities to garden - more green spaces and bike-ability on streets like McCausland.
Recruiting business to the area should not come at the cost of increased pollution including traffic flow, and sustainability measures should be part and parcel of any and all development and renovation.
Busy streets that lack sidewalks or bicycle lanes, poor water quality in local urban stream
Low awareness that we are ruining the planet with our extractive economy and exploittive business practices
Fear of change does not allow for visionary thinking.
Schools & roads.
Quality public education for all residents.
Our lack of entrepreneurial spirit, unwillingness to change, tolerance for new ideas and ethnic groups.
Lack of jobs and healthcare for working class. Still very segregated racially and economically Public transportation difficult, Not bike friendly
East ST Louis... lack of resources to support economic development, individuals being trained appropriately and compensated.
Lack of quality education opportunities for all, crime (particularly in STL City, and adequate transportation access for all modes of transportration)
I would like to see safe bicycle and pedestrian pathways for commuting, sustainable practices and policies in place within the schools and municipal government, sustainability education for residents and business owners. Not a fan of large strip malls with big box stores which take business away from smaller, independently owned businesses.
The summertime climate is becoming unbearable. The educational system seems to be failing. Lousy air quality. Flood plain building needs to stop-- we are a hot-spot of flood-plain construction.
I would like MSD to do their job before it becomes a health or giant tax issue.
St. Louis region doesn't seem to be growing, but yet planners want TOD, mixed-use development, while developers and homebuyers still want sprawl.
Not growing enough jobs. Public transportation routes are plain goofy. Don't seem to prioritize maintenance of green space.
We need more metrolink stations
Intellectual ability of elected leaders to provide guidance and make decisions based on a thorough analysis of the facts.
The influx of undesirables coming into our community due to the metro-link, and bringing bad ideas with them, theft, vandalism, shoplifting...drug dealing.
Pays too much to non point of sale cities who are able to maintain themselves; some cities need to disband
All of the municipalities that are competing with each other and hurting regional growth. If you look at all major statistics over the last 30 years, the region as a whole has declined; our state is usually at the bottom. The only things that we rank high on is our water, meth labs and puppy mills (and the last 2 are nothing to be proud of).

All of the municipalities that are competing with each other and hurting regional growth. If you look at all major statistics over the last 30 years, the region as a whole has declined; our state is usually at the bottom. The only things that we rank high on is our water, meth labs and puppy mills (and the last 2 are nothing to be proud of).

Answers - Northeast County
drastic, long term, poor quality education
My community is spiraling down with little to no hope of it being revitalized anytime soon. I had hopes to make some profit from my home because of my sweat equity and now I am stuck here because my home is not worth what I paid for it. Without, a significant change in public policy and demeanor towards North St. Louis County and City this area will soon resemble Detroit or East St. Louis.
safety and littering
The crime rate has increased dramatically in the last 5 years. Also an increase in rental and section 8 housing. We have lived in Glasgow for over 25 years and paid \$47,000.00 for home if we sold the house today we would be lucky to sell for \$10,000.00 because of the condition of the neighborhood as we found out through other neighbors selling their homes.
keeping kids off the streets and having a place to go in their neighborhood or community with out it costing them a lot of money.
too many folks moving out because they perceive that their quality of life has declined.
No desire to get to know neighbors, no looking out for one another and standing as one
absence of sense of "community" limited access to public transportation lack of economic vitality
housing-
vacant houses and declining house value
Crime, closing businesses, empty houses
The low income housing, with seeming few of the inhabitants having employment and having several children.
Vacant housing and crime
Keeping it crime free, keeping drug dealers off the streets, keeping youth busy doing good things - I would like to see more after school activities with transportation options.
Our communities are not diverse enough. All different races, creeds, economic levels, seem to interact within their own category(label). Our lives depend too much on automobiles only. I'd love to take a bus ride to Souldard Farmers Market from Spanish Lake but it would take nearly three hours one way on a Saturday. I believe we can't say or do anything to change race relations because wealthy people want to keep poor people away from them and that's why the bus routes are not convenient for people that need to work in the West County but live in the North County. I think we should put all our efforts in getting transportation and housing for the working class poor available in the West and South Countys, especially since those areas seem to be the places where the jobs are. More busses and the schedules should run later to accomodate the night shift employees. I also think the public school system is doing a good job of improving but its still not on our list of highest priorities and educating the children should be top priority.
poverty, opportunities for youth and families, public transport, support for small enterprises, job mentoring and internships with possibility for hiring.
too sprawled out, very poor air quality, too many people living in poverty
pollution and crime
The resegregation of our public school system and the implications that arise out of that.
Regionalism: too many municipalities, too many school districts, too much money spent by these entities on bureaucracy. Keep expanding green space and trails.
Derelict housing.
low income housing/subsidized housing, crime, lack of responsible home ownership, concept of entitlement to public assistance rather than self-reliance
"My" community is effed up beyond repair! Spanish lake, i.e. north county bad lands. when county police have to locate a station inside country village, (subsidized housing) apartment complex OMG!!!!!!

Too many foreclosures, too much HUD housing
marginalized property value lack of businesses
Crime and Safety, Lack of pride that people have in themselves and their community, Disrespect and disregard that people have for their neighborly and social obligations.
jobs
Answers - Pevely, Herculaneum, Festus, Crystal City
There are not enough jobs and too many people driving cars.
Safety
not enough decent paying jobs.
lack of jobs
Crime, The City of St. Louis is a very dangerous place to visit and travel through. The gangs, crime, murders, robberies are out of control. Let the police do their job and reduce the criminals in the area. Crime is a real black eye for the area
That we will stagnate and not continue to grow, lack necessary resources, lack housing choices, see a severely deteriorated downtown.
roads
Lack of vision for the future, staying where you are and not moving forward. Being willing to change, moving with technology to be the best we can be.
BRINGING IN MANUFACTURING JOBS
Intrusion of Government and "Community Planning" into the free market economic system.

Answers - Riverbend
Lack of quality housing
Employment opportunities, quality education, and crime reduction.
connectivity, first in transportation, secondly ordinance abuse by both individuals and the governing bodies
poor housing and crime
unemployment, economic disparity, crime, illegal drugs, poverty
Drug problems, lawlessness. No support systems to treat these problems positively.
aphathetic about the environment and the harm we are doing to it, apathetic attitudes to fellow mankind
air and water quality and job opportunities.
Economic independence so that we wean ourselves away from dependency on big-box merchants and begin relying once again on ourselves for retail and services.
Here in Madison County, and specifically, Alton, our elected and appointed officials, seem regionally disconnected. There's no real plan to "sell" the region or an organized plan for redevelopment. Private, innovative, developers are turned away. Right now, we are trying to "lure" a hotel developer to our Riverfront, while an old hotel with great potential a few blocks away rots. Why would we "give away" riverfront property that is much needed for recreation and greenspace when perfectly good buildings suited to hotels are already here?
Lack of quality jobs, lack of useful public transportation.
People are lazy and don't want to do there part to make a better and healthier life as far as environmental sustainability.
Crime, education, air & water quality
More recycling centers.
Clean water, soil erosion, maintain and possibly rework sidewalks and drainage systems.
disconnectedness with neighbors, community
--You have to have a particular need or drive to be using the bus system here. It's not like it's well publicized. The bus stops are barely marked. There's few if any shelters at bus stops. It's not the hip, normal, cool thing to do for urban professionals like it is on the east coast, Seattle, or Portland... -While it's great that there's farmers markets and organic farms that weren't around when I was growing up here (Madison County) in the 70s and 80s, support for ecologically grown local food has a long long way to go. It's important for the environment, economy,

and public health. Agriculture is still dominated by nasty Monsanto and corn/soybean monoculture hell around here. Yuck. -There needs to be more bike lanes and bike/pedestrian friendly roadways -Alton and Edwardsville areas have great potential for intelligent eco-friendly development. It will be pretty appalling for the future development of Edwardsville to continue with souless "sprawlville" box store, strip mall inanity. So much potential for a livable city there. -For "green development" to happen here, we need the support of local governments. Incentives for energy efficiency and eco-friendly building. For as much sun as we get here and the amazing advances in solar technology, I don't really see much here. -It may sound minor, but residential landscaping is a huge environmental issue here. Like much of the Midwest, the "Almighty Lawn" is King here. I lived for almost 11 years in the Pacific Northwest and then 6 years in Albuquerque, NM before moving back here. I'm more accustomed to the norm of landscaping with easy-care climate adapted plants that look beautiful and provide habitat for numerous bird species. I imagine the ecological degradation caused by maintaining the big and small lawns here is difficult to measure...herbicides and chemical fertilizers have to take a toll on water quality and public health. In Albuquerque the city gave financial incentives for xeriscaping because it was imperative to conserve water. Here, perhaps water quality is a more important issue. And much of that lawn space could go towards growing food! -Um, haven't gotten up to date with current issues since I moved back (in March), but I wonder about the pollution from Illinois Power and the refineries in Wood River. Who's watchdogging them? This is coming from someone with parents and family who have worked there. I guess that's enough...
Loss of small businesses, loss of green spaces, too much reliance on fossil fuels, high unemployment
Ensuring existing resources are being used and maintained properly, the crappy foods still being served to school children and the lack of ability or flexibility of schools to change the food system,
Balancing the needs to infuse more sustainable practices into the every day lives of community members while dealing with the very real needs to address crime reduction, and affordable health care costs for all people in our communities.
I think we need to focus more on services than on manufacturing in order to reduce consumption of things that we don't need. It's hard, because jobs are so connected to having Things. One works in order to buy Things. It's a completely unsustainable model. There needs to be more emphasis on quality of life - experiences, health, relationships... not just stuff. It's the American Dream that is dragging us down.
The exploitive nature of too many "growth" strategies. A transportation system that enables trade to pass thru STL without improving the quality of life here in STL.
Maintaining and growing my city budget.
Lack of true transportation options

Answers - Tri-City
cleanliness, crime, corruption.
Lack of proper parenting. People are not being raised to see any job as a valuable step to a better future.
Housing Affordability Job Market
More government and state handouts without accountability from the people benefiting from the programs.
JOBS, JOBS & JOBS! ALSO THE CURRENT FUNDING OF ELECTIONS, INCLUDING THE UNNECESSARY MO. PRIMARY!!
the economy
Lack of unified government makes regionwide change nearly impossible.
The safety. Certain types of people with no pride seem to be taking over. It's sad to see once beautiful neighborhoods and homes look like trash
The increase in minority's that has caused white flight to Edwardsville, Troy, Maryville and surrounding area.
Dislocation of the middle class that causes good residence to move from our community in search of better schools, lower taxes and a safer environment. Meanwhile, low income people come into our city from communities that can not meet the needs of their children and the safety of their families.
It relies too much on the largest employers for the tax base. Profit over people is what drives them. Cooperation is a must - but so is trust.
Inadequate supply of appropriate housing types, aging infrastructure (streets + sidewalks), lack of economic diversity, low overall education levels of the general population.
Safety/violence issues

Public Schools, Drug and gang control
Lack of job opportunities, lack of quality public education, rising costs of college tuition, deteriorating roads/sidewalks,
Public health services for the lower income and emergency housing for the temporarily displaced.
Jobs
I live in Illinois and it feels like we are so deeply in debt as a state that we will never recover. Also, giving money away to people in the form of some type of government aid when they are on drugs or don't try to help themselves. No one takes responsibility for themselves anymore, or everything is someone else's fault.
Many people seem not to care about anything, like they've lost hope.
Air quality More, good paying, union jobs
development in the floodplain, air quality, economic development at the expense of public safety and quality of life, need for a sustainable and healthful environment, failure of governmental bodies to work across political lines, lack of public input into decision-making, and failure to fully inform the public.
JOBS

Answers - Wentzville, Lake St. Louis, O'Fallon
appearance
difficult recycling, air quality, no St. Charles access to metrolink, loss of manufacturing (union) jobs
Why does St. Charles County have this "fear" of the "outsiders" or "bad element perception"? Believe it or not the "bad element" is already here and they've been here for some time now.
Transportation availability for the disabled and handicapped
Too many strip malls. Close businesses on Sunday.
Homelessness Road repair
Lack of growth
Smoking in all public buildings needs to be addressed as key health concern. Also need to expand public train/rail west.
I live in a new subdivision where the original builder went bankrupt. Like many of my neighbors, Wentzville was sold as a city with high standards in the way it wanted to grow. We have new builders in our subdivision building homes half the size of the original homes. There are two fears of that. One, a decline in the potential value of my home. Two, the risk of the homeowner that will attract. I know people who live in less expensive neighborhoods and I have seen the way they raise their children. It is not an environment I want my children to live in.
CONSUMER CONFIDENCE
I believe that the city of O'Fallon should allow code enforcement to deal with violations if they see them while driving around town, especially on the north side. Why do citizens always have to call, sometime several times, before code will look into it?
House values declining
We enjoy living in St Charles County and would enjoy more attractions west of Hwy 270. On a serious note, affordable access to health care is a basic key need for the entire metro area. We must meet key needs & make a priority such basic human needs of health, housing & feeding of our citizens.
Foreclosed homes have destroyed my property value. My home is not much - it appraised at \$249 in 2006. My neighbor who never worked and somehow got a house down the street for me was foreclosed on, that house sold a few months ago for \$120,000. My home has no value - she lived there for a year without making payments. It is depressing to know that I work hard and pay my bills while others who do not can have such an impact on my finances. I am struggling to put two kids through college and will have a third to put through in three years. If I was not middle class paying my bills, my kids would be eligible for a free education. In my opinion we need to reward the middle class workers and stop catering to those who do not want to work. I wish I could provide the opportunity to my kids which would be available to them if I lived off of the government. I have paid into a system that provides more for other children than my own.
resources are much less in St. Charles County than in other counties
Lack of transportation, housing, employment and social opportunities for people with asperger's
Keep it classy. Access to jobs keeps everything moving in our economy. Jobs pay bills, allow for shopping and

entertainment, and give a sense of pride. I also support the development of green space and beautification of our commercial developments and roadways.
extremely high gas prices that limit travel and politicians who are more concerned about saying the right things and getting reelected rather than solving the problems.
Affordable, quality healthcare available for all citizens; return of well paying jobs; adequate food and housing for all citizens
crime, drug abuse, cost of living increases, jobs
Lack of good neighbor qualities. Too much self-serving attitudes.
Remaining competitive economically
That we have a lot of white elephant building sitting around - for example the buildings over by the Dollar Store on K. The other is concern is the section over by Commerce Bank on M. They tore down all of those buildings and now the stores they planned are not there.
that our roadways remain open and not tolled.
criminals coming into St. Charles County
Local public transportation for people that cannot drive. There is no public transportation in O'Fallon.
Amount of foreclosures, reduced job market, cost of living
to many towns in the reagon. pathetic amount of government waist. city and county leaders that can't make a decision on anything. city living tax. lack of being able to design a road that works correctly and solves traffic needs for years to come, not addressing issues from 20 years ago. starting road projects, awarding the contracts as "phases" and then watching every single project take 50% longer to complete than it should.
blight
We get too shut in on ourselves.
There is a severe lack of public transportation in St. Charles County which needs to be addressed.
We need more transportation for older adults who are not able to drive
GOVERNMENT
My major concern is the development of regulations that are designed to subvert free market capitalism. Communities must retain local control and stay accountable to community residents. "Diversity" and "sustainability" are politically charged concepts that have mixed meanings and carry lifestyle and economic choices that must be clearly linked to whatever is being proposed as a public (community) goal.
No bicycle paths for commuting. No regard for cyclist or pedestrians.
Not busing in half of St. Louis to my community!!!!
No public transportation that connects to metro link. Our cars are fine in St. Charles county but my husband and I work in Clayton and Creve Coeur. We are considering moving out of O'Fallon and back to St Louis County because there is no access to the metro link out here.
need more adult recreation besides gambling
cost of schooling, High cost of fire service.
Lack of public transport and cities allowing development without future public transport in mind
The toll road they are talking about putting in. I don't want it.
Over inflated expectation or sense of entitelment when comparing wants and needs. The endless mailings to encourage the use of credit and create more family debt to reach a certain standard is crushing many families. Part 2- The constant lack of cohesion between the STL City government and STL County government is regionally known and has national side affects. We are our own worst enemy with too many municipal governments. With nearly 100 municipalities in the county there is no hope to achieve a certain standard or level of community. There are too many communities with too many different ideas, different tax bases, varied demographics and other unique characterisitcs.
Traffic
The traffic on highway is a nightmare. It takes me 20-25 minutes to get across O'Fallon. Bryan Road is an option that was used by now the traffic flow is bad there also. The north south options are scarce. Also I would like to see some type of public transportation. I think that would alleviate traffic not only on K but on 70 an 64/40. Many communities in other areas has park and ride options where you can take a bus to Downtown or a metrolink station. That would relieve some congestion on the highways. It is a complete stand still most of the time from

Highway K to the Blanchette Bridge.
Roads are maintained on a regular basis. The use of tax increment financing has become overused, too much trash on our roads and highways.
enough resources to continue the high level of public safety I am used to
TOO much politics in all economic decisions that affect everyone
Very little interaction between neighbors
too many foreclosures, people need help to stay in their homes so the community can stay strong
Big picture - affordable healthcare access for all citizens; local area - would like more sidewalks, walking trails & enforcement of ordinances that insure homes & lawns are well maintained
Living in O'Fallon, MO, I am pleased with much of what has been accomplished over the years. O'Fallon's primary room for improvement lies within it's so called Main Street. There are a few gems such as McGurks's and Rendezvous, but the vast majority of this street consists of random clusters of disjointed consumer strip plazas and fast food providers. There is an immense opportunity for a real Main Street experience which is host to public spaces, appealing architecture, and pedestrian friendly shopping.
To many people who are lazy & think the government should support them.
To much govt intrusion
For my community, Jobs
the downturned economy
The ability to fund needed road infrastructure while keeping business taxes low to encourage competitiveness.
Creating an economic environment so that young professionals will want to live here.
Lack of any 2-4 yr term strategy or focus. Short term actions predominate. Political entities are isolated & inward looking.
Good education and reduce crime
Lack of construction which hurts housing types, jobs and has economic impacts that are far reaching
Living in SCC I feel that my enviroment is good however, with the constant talk and building of 'super centers and stores' the cities need to be aware that giving tax breaks to big corporations is not a good thing in the long term for the residents of the area.
Biking and walking trails
business competitiveness fragremented governments
crowded lake
Reduce size of government and taxes accordingly.
Lack of safe, well maintained trails in my city
Rapid growth. County unable to keep up
There are no bike lanes.
Land use is segmented to highly in all areas. Few communities beyond first ring have areas with mix of uses (please note, I'm not saying everything has to be this way, but too many cities are reluctant to allow any mixing) - fyi, question 12 is too broad. under my idea that economic sustainability, i view it highlyly. under someone else's definition, my answer would change.
inadequate public transportation
Lack of regional identity. Crime from lower income areas. Erosion of St. Louia-area natives to more progressive communities.
Unemployment, affordable health care, Police and fire Protection, organized plan for emergency within each community.
The entitlement mentality, Too many people want their participation trophy without putting the blood, sweat, and tears in to earn what they receive
lack of job growth/opportunities for well paying jobs, that force our youth to move to other areas of the country where those opportunities exist.
I'm in St. Charles County and there is virtually no public transportation. I work with people with disabilities and many of them could WORK if they had reliable public transportation
increase in taxes, lack of government responsibility and quality of products/services provided by local

governments
Too much building up without fixing what is already there. New Construction going on but there are vacant buildings looking for occupants.
traffic issues
speaking only for O'Fallon....not enough Road improvement; St. Peters -- spending money frivolously on lamp posts with decorative gardens around them Not enough focus on trying to get businesses into our areas
the "balkanization" of the community governments--too many overlapping fuctions of government where neighborhoods could serve as the local focus.
lack of community attitude, not knowing the people around me
safety, cleanliness, jobs
SAFETY
environment
Overcrowded schools
New roads going in that are not accommodating transportation by bicycle.
no public transportation,
safety and traffic management
The disparity of funding federal and state funds from St Louis City based funding throughout the metro area.
Affordable Housing
The lack of attention paid to those receiving assistance from the government. the obvious decline of certain areas not being upkeep.
Serious lack of public transportation and lackluster performance in public schools.
tons of empty strip malls; overcrowded schools, overused streets and not enough maintenance
Crime
Pollution (i.e., Labadie power plant) and our incessant drive to sell off any asset we have (parks, I-70 being tuned into a toll road, etc.).
I think that it is falling apart and it was such a good place to live. Neighbors don't talk to each other.
Employment, continued growth of health care and dealing with corrupt politicians/public officials
Its hard to get around without using a car. Living in O'fallon I really notice this along Hwy K. Sidewalk and footpaths start and stop without warning. There doesnt seem to be any planning. I would like to be able to walk or ride my bike to get groceries, go out to eat, or run other errands, but I just dont feel safe.
there is a trailer park near HWY 40 and HWY N that has many decaying homes. A road cuts through the Villages at Springhurst, and I have watched cars race through our neighborhood, and vandals leaving that area pollute our area. I know crime is everywhere, but that area is an eyesore and we are getting the overspill. I know there are decent people in every community, but it is amazing that a high percentage of our neighborhoods problems are a result of that adjacent trailer community. Bridgeton/Maryland Heights used to have trailers near Lindbergh. Not anymore. O' Fallon and Lake Saint Louis should take note.
Lack of public transportation in St. Charles County
Not enough sidewalks
Roadside trash and lack of biking/walking paths
Decline of house prices. Loss of work
Crime, illegal drugs, gangs, constant request for handouts, too much government
the willingness to compromise and work together to creating a "can do" attitude...
Mass transportation & infrastructure
crime
The lack of neighborhoods to enforce their indentures, demand upkeep of homes, and the poor look of the city itself. The roads, for example, along highway N, where and are being redone. Sod was put down and now has turned to weeds. A curb was not installed. The land washes away along the road and looks terrible. Something has to be done to make O'Fallon look better. Really, we border Chesterfield, who cares about the roads and vegetation along the roads, and St. Peters who is working to better their look along the roads. Then you have

O'Fallon, overcrowded, and nothing to separate us off and give us any uniform or charm. Just overabundance of fast food, homes not kept and weeds. I am very disappointed.
Would love to see a walking/running/biking trail system like Flagstaff, Az has.
2 things: 1: there is very little biker/walker friendly areas in our community. Without it, you cannot promote healthy living through exercise; it's too dangerous to ride bikes and walk the way it our roads are setup now. 2: In O Fallon, MO there is only 1 major N-S route (hwy K) and very little E-W access that is easy to get around. If Hwy K is shut down for an accident, there is NO way around it. This city in particular has not been well designed to promote less congestion and safer roads.
Safety, neighborhood upkeep, cooperation between local governments avoiding duplication, leadership.
We are not energy conservation minded. By reducing everyones consumption people will be able to save money and not produce as much green house gases and reducing everyones carbon footprint
all of # 10 plus high foreclosure rate. Too many bible literalist(end of days people) tea partiers
public transportation
Need for road repairs; strip malls sitting empty for lack of businesses
I realize that we don't have a dog but there are some people in the neighborhood that will not pick up their dog's droppings.
The number of foreclosed homes that are bank owned and are being neglected, bringing my property values down lower.
Lack of public transportation in St. Charles County. My daughter attends St. Charles Community College and does not drive. It is a hardship to family to drive her back and forth.
empty store fronts in ofallon- we shouldn't be building more, should be filling in what we have!
I think the "Westplex" is doing a better job at recycling, air quality, etc. My concern is the city of St Louis' efforts and the poor air quality due to the need for a car to commute from St Charles County
Large corporations taking economic value out of the community (hurting local business) and environmental pollution.
unemployment, affordable healthcare
Economic stability of the St. Louis region and growth of downtown. How do we keep big business here and expand job opportunities.
JOBS

Answers - Non-CPA
No Jobs
Not enough sustainability through well established businesses along with blue collar green jobs relating to manufacturing
mass transportation (or lack of). perhaps establish vanpools if necessary.. loss of connection between human needs and environment.
Lack of concern with regard to the lower economic groups.
Is my community (mayor - municipality involvement) really concerned about sustainability? How much involvement is there from my local government - I would like to know how invested they are? And how can I assist as a resident? COMMUNICATION!
Division between upper and lower classes and the disappearance of the middle class.
Edwardsville: That it continue with the "cool cities" committments.
Economic development, enticing corporations to locate in this community.
zoning, lack of planning
trash....no to little recycling irresponsible use of resources...like water, electricity and gas getting kids outside and have good opportunities for graduating high school students after graduating for jobs
It is too political, especially too tied to Monsanto-type corporations, to honestly produce the environment in which I would really like to live.
leaders might say they'll do one thing then do something completely opposite with the good-old-boys network still in charge

Education, access to quality food, safety.
Job opportunities
housing stock
education quality and education funding
Governments tend to grow and reduce services to cover the staff costs. Governments are almost never as efficient as private sector.
See above, questions 1-9.
Making sure our politicians are ethical, honest, capable. Reducing the units of government to avoid duplication. Addressing urban sprawl by zoning, etc.
lack of transportation options
That poor people are sending their kids to awful schools and don't know about good options and don't have many good options, educationally or economically
People not believing they can make a difference on factors listed in the survey.
Safety and healthy foods.
Lack of collaboration between the many local governments in the metro-east, poor sidewalks and unsafe bus stops in St. Clair County, a lack of attention to green space and complete streets in various areas in the community, over development without accounting for long term consequences. A need for trade schools that teach marketable skills, a need to improve energy efficiency in the building sector and investment in green jobs.
The St. Louis school systems are a huge concern as well as our homeless population.
Percentage of citizens below the poverty level. Quality and safe public high schools in Metro-East.
Company headquarters leaving the area and job loss.
aging and outdated transportation infrastructure
heroin overdoses and drugs in the community
The urban sprawl that is grossly uncontrolled throughout the St. Louis metropolitan area.
lack of bicycle/walking paths, limited mass transportation
clean air
lack of quality primary education and affordable secondary education; public transportation accessibility and economic opportunities not available
very limited alternative transportation not bike/ped-friendly not diverse (culturally) sprawl impervious surface farmer's market offer little variety/quantity
EDUCATION COSTS
Lack of community involvement.
Petty politics; lack of coherent planning across artificially-created boundaries separating communities (too many governmental units)
1. The St. Louis area is not safe. 2. Too many people expect the government to meet their needs. 3. Too many businesses are leaving the St. Louis area.
Crime & safety, environmental issues, and public accessibility
lack of quality public education and diminished local economy
Safety.
lack of employment opportunity
Elected officials unwilling or unable to do what is best for their constituents, which would be to work as a region and not in a silo.
Continued erosion of our economic base; we are now a secondary stop for airlines (not a hub); a division location rather than the corporate headquarters and our form of government(s); multiple small communities vs one (1) St. Louis (be it city or county)
One major concern I have at this time is access to safe, economic, and environmentally sound transportation. The bus and metro system should be expanded so that more citizens have access to and would be encouraged to ride public transport.
Nobody seems to have learned from the experience of Soviet and East German and Estonia: centralized

government planning is an unworkable idea.
SAFETY
We need to focus on cleaning up crime in St. Louis and generating jobs. Environmental issues should not be a primary concern.
We need to have MULTI modal transportation! Not just the car!
Lack of employment is the top of my list, but I also am trying to find employment where my interest in sustainability is put to use, so far that is not happening. I'd really like to stay in St. Louis, after my last child finishes school here. Ironically I moved here for a job I no longer have, can't seem to find another one. I'm too young to retire!
Lack of public transportation opportunities
Too much dependance on Retail Tax base
illegal drugs. no local jobs, our children having to move to bad neighborhoods in order to find affordable housing/apartments.
growth
Economic development, education, food desert, and sustainable development.
the extreme inferiority complex we seem to have about anything we do. I think it gets in the way of moving forward
Separation of County and City will make long-term success in our region impossible
Education, Transportation, preservation of our historic assets
Safe transportation options. I live in Kirkwood but work in Chesterfield, no safe commuting by bike.
Lackof awareness for efficiency, lack of incntive for efficiency gains in residential housing stock. Lack of government support for sustainability education and outreach. Too much business as usual.
lack of mass transit in my community
Enough jobs and job growth to both attract young professionals from outside our region and to keep a talented workforce in our region.
I think the level of segregation in our region is deplorable and greatly affects (negatively) our ability to grow as a region. The educational disparity is also a significant problem that must be rectified by continuing to improve the public school system in those districts where the education provided is not as good as surrounding districts. Consolidating some smaller districts in the county, if the districts were amenable to it, would also help ease the economic hardship and difficulties some of those districts have -- especially the hold harmless districts that have been strongly affected by the economic downturn and its affect on real estate values.
stale leadership in public government./ 92 municipalities in st. louis reginon is FAR too many. too many parochial perspectives.
no realistic public transportation. crime rate in the City is perceived to be too high for some to go to City for entertainment/dinner etc.
Too many political jurisdictions contribute to a fragmented region. Lack of political leadership. No consensus on how to move the region forward.
Housing, employment, walkability
economic and educational distress
Being environmentally responsible
Inflation. Depreciation in housing prices. Lack of Metro Link to south county. (Shrewberry is NOT south county). Inflated gas prices due to restrictive government regulations that prohibit domestic oil production/refining.
No collaboration, infastructure issues, racial concerns, lack of good employment opportunities
job growth progressive thinking about change
schools, we have no easily accessible public transportation that goes to places that you want to go grocery stores, malls etc.
Social barriers as well as equal access (especially in St Louis city) limit educational opportunity and achievement.
So many people in this community do not know the sense of urgency & how much in danger the environment is. People only recyle if it's convenient, and don't realize there is no "AWAY" when it comes to trash. We're running out of room, and contaminating the soil...

Housing values skyrocketing--purchase prices too high!
small municipal governments unable to deliver quality sewrvices
Feel that the area needs more jobs, creativity to recreating communities that are on the decline and the ability to respond to crime in all areas of St. Louis City and County.
fragmentation of cities and spatial disparities by class and race
Apathetic Elected Officials
lost of economic intergration in the community
lack of easy-to-navigate and fast public transportation routes the proliferation of chain restaurants and businesses vs. independently-owned and -operated the need for farmland preservation
To be honest, ethnic problems
the instability of neighborhoods- the lack of permanacy of residents leads to increse in crime and decrease in school performance. Also the imbalance of services such as road repair and police presense in "poor" neighborhoods
none
I am concerned about negative stereotyping about the North County community. Most of the residents are hardworking and contribute to the greater good of the community, however public opinion and the media paints NOCO as a wasteland devoid of culture or civility.
I am concerned mostly about the quality of the schools in the ferguson Florissant school district. I wish I could send my kids to the language immersion charter school in STL city.
jobs, crime and lack of downtown growth. We need to attract large companies into St. Louis verses losing them.
-slipping educational and job training standards. I've had a long list of applicants for jobs who lack even a basic understanding of responsibility, math skills or professionalism. - political apathy from residents along with local & state governmental policies and practices which encourage that apathy (and ignorance). -lack of transportation options. Putting the building of new highways before maintenance of existing hwys & bridges and the expansion of metrolink is the most short-sighted decision the region has made.
Transportation is a major concern of mine. All great world-class and global economic cities have a first class mass transit system. If St. Louis hopes to compete domestically let alone internationally, Metrolink must be expanded, MetroBus must become better, and commuter rail, streetcar lines must be built also.
Unemployment
lack of major employer to keep local residents employed
Unemployment in the St. Louis Region, foreclosures, & the rising costs of fuel and energy
environmental, rising costs
New roads going in that are not accommodating transportation by bicycle.
poor infrastructure
not enough economic development
That the liberals are brainwashing my children at school. They only present one side of any issue.

12. On a scale from 0 to 9, where 0 indicates “not important at all” and 9 indicates “extremely important,” how important do you think it is for the St. Louis area to address sustainability? Feel free to use any number on the scale that best reflects how unimportant or important you think sustainability in the region would be.

CPA	Average Score
Belleville-Swansea	8.29
City of St. Louis	7.84
Ferguson and Environs	7.63
Lemay	7.76
Mid-Metro 5	7.96
Northeast County	8.00
Pevely-Herc.-Festus-Crystal	7.45
Riverbend	8.60
Tri-City	7.71
Wentzville, Lake STL, O'Fallon	7.30
Non-CPA	7.46

13. What is your age?

CPA	Average Age
Belleville-Swansea	42.29
City of St. Louis	40.76
Ferguson and Environs	43.13
Lemay	53.71
Mid-Metro 5	48.13
Northeast County	56.27
Pevely-Hercy-Festus-Crystal	51.27
Riverbend	49.60
Tri-City	45.55
Wentz, Lake STL, O'Fallon	49.94
Non-CPA	45.43

14. What race would you consider yourself to be?

CPA	Total	Asian	Black, African American	Native American	White
Belleville-Swansea	7				7
City of St. Louis	96	1	5		90
Ferguson	8		1		7
Lemay	17				17
Mid-Metro 5	53				53
Northeast County	27		5		22
Pevely-Herc.-Festus-Crystal	11				11
Riverbend	23		1		22
Tri-City	29				29
Wentz, Lake STL, O'Fallon	152	1	3		148
Non-CPA	109		4	1	104

14a. What race would you consider yourself to be?

Race	Total
100% American	1
A mix of all kinds at this point.	1
American	1
anglo-american/native indian/mexican/french canadian american	1
Bi-racial/Black & Native American	1
Black, African American	2
Hispanic	1
human	2
Irish American	1
Mix	1
Non-Hispanic	1
not a factor	1
nunya damn business	1
terrian	1
This is personal,why should this matter?	1
United States of America - Southern by birth, Missourian by the grace of God	1
WHY DOES THIS MATTER	1